

## CASCADE / PLAN 3540



A

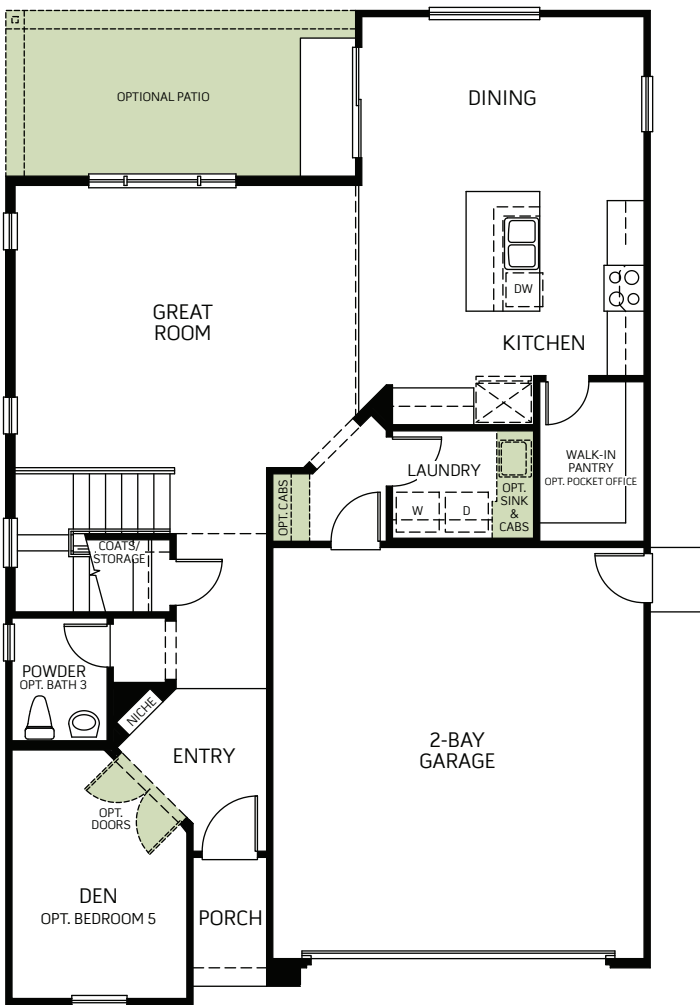


B

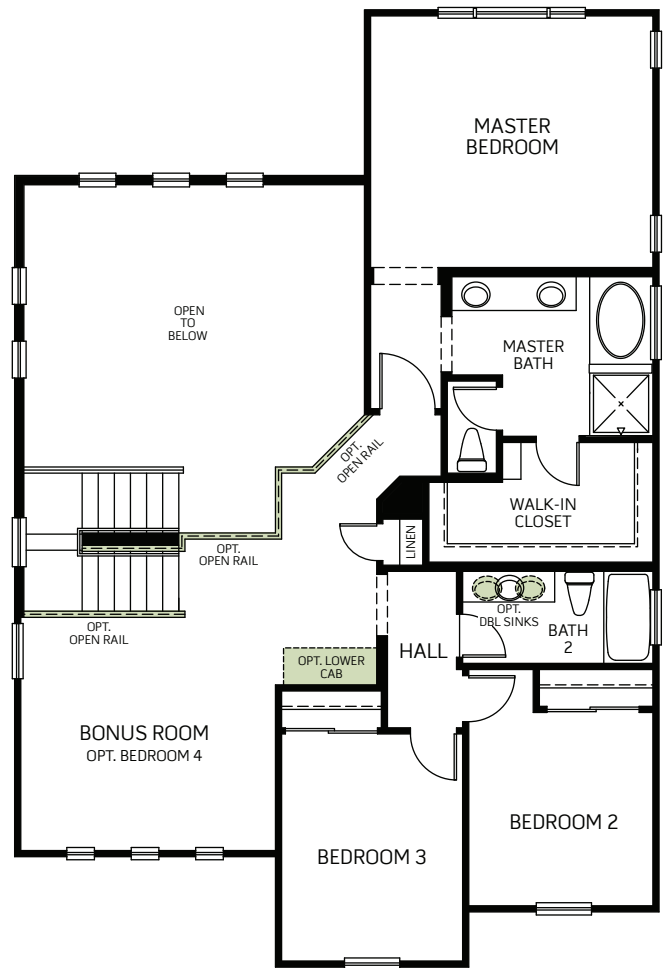


C

Two Story • 2,323 Sq. Ft • 3 - 5 Bedrooms • 2.5 - 3 Baths  
Great Room • Kitchen with Island • Bonus Room • Den • 2-Bay Garage



FIRST FLOOR



SECOND FLOOR

Woodside Homes reserves the right to change elevations, specifications, materials and prices without notice. All square footages are approximate. Window location, porches, ceiling heights and room dimensions vary per elevation. The availability of certain options is subject to construction status and schedule. Optional features may be predetermined and included at additional cost on select homes. Renderings are artist's conception only.



## CASCADE / PLAN 3540

### OPTIONS



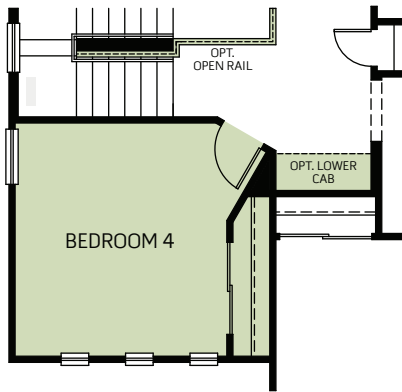
A



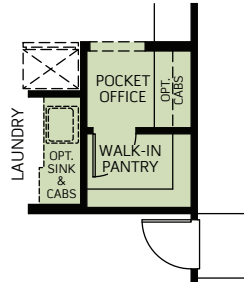
B



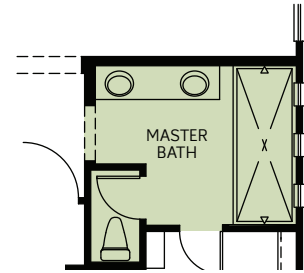
C



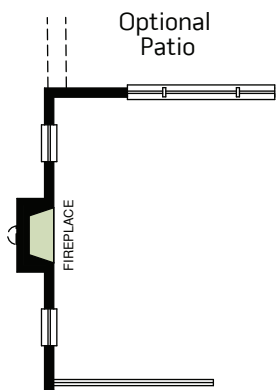
OPTIONAL BEDROOM 4  
IN LIEU OF BONUS ROOM



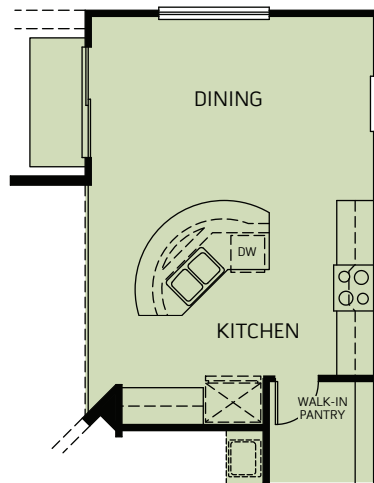
OPTIONAL POCKET OFFICE w/ WALK-IN  
PANTRY IN LIEU OF WALK-IN PANTRY



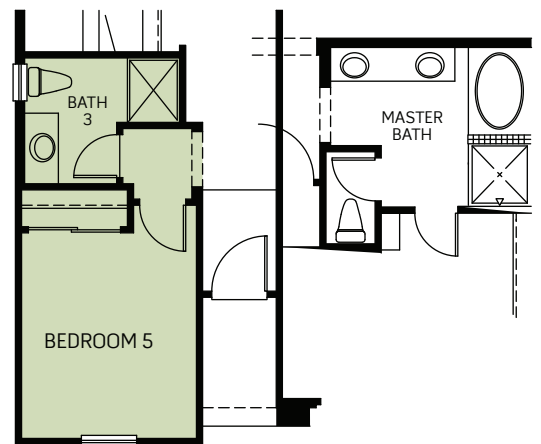
OPTIONAL SUPER SHOWER  
AT MASTER BATH



OPTIONAL FIREPLACE AT GREAT ROOM



OPTIONAL ALTERNATE KITCHEN ISLAND



OPTIONAL BEDROOM 5 w/ BATH 3  
IN LIEU OF DEN w/ POWDER



Woodside Homes reserves the right to change elevations, specifications, materials and prices without notice. All square footages are approximate. Window location, porches, ceiling heights and room dimensions vary per elevation. The availability of certain options is subject to construction status and schedule. Optional features may be predetermined and included at additional cost on select homes. Renderings are artist's conception only.

