

PORTOFINO - PLAN 3



A



B

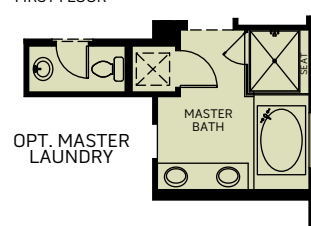
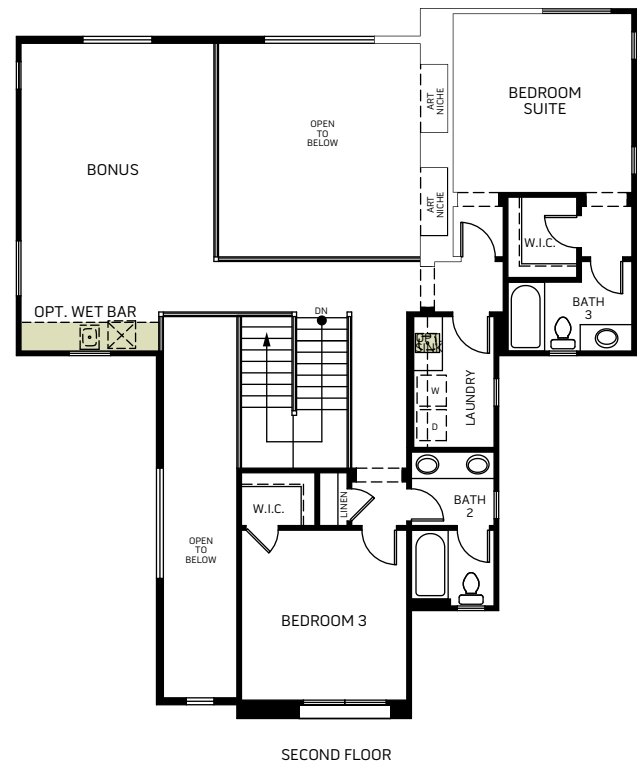
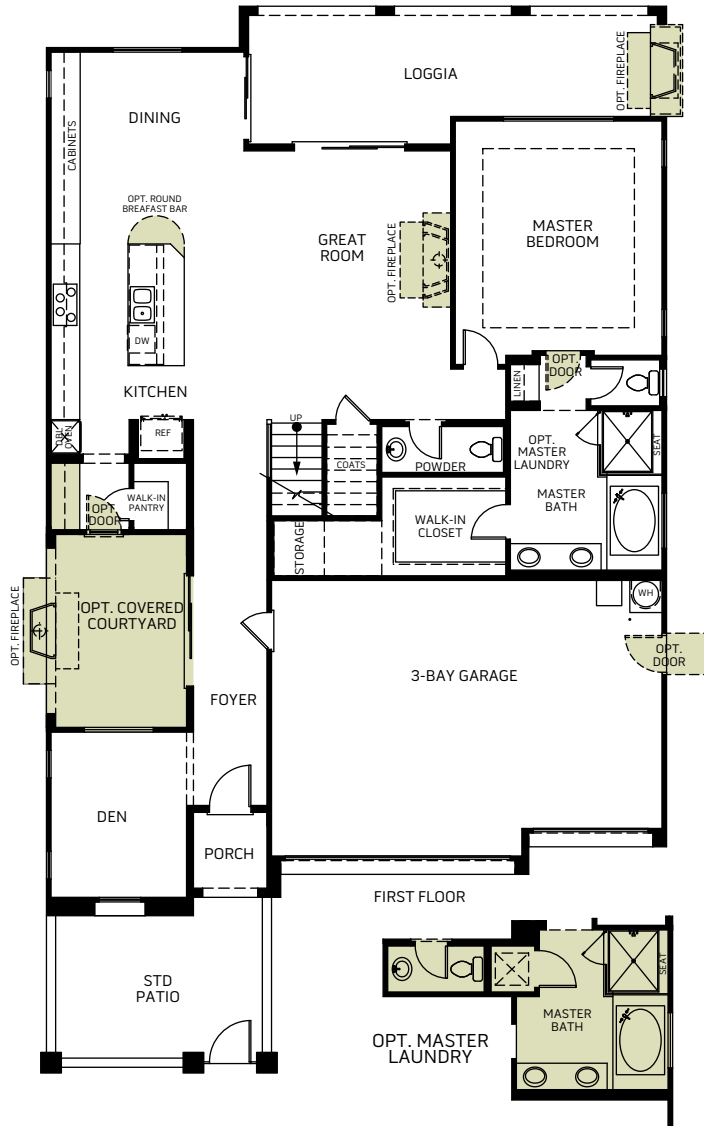


C



D

Two-Story • 2,996 Sq. Ft. • 3-5 Bedrooms • 3.5 - 4.5 Baths • Formal Dining
• 3-Bay Garage



Woodside Homes reserves the right to change floor plans, features, elevations, prices, materials and specifications without notice. All square footages and measurements are approximate. Please see Sales Professional for full details. 2/3/2017



Sales Office
6338 Skystone St.
Las Vegas, NV 89135

PORTOFINO - PLAN 3

OPTIONAL FEATURES



A



B



C

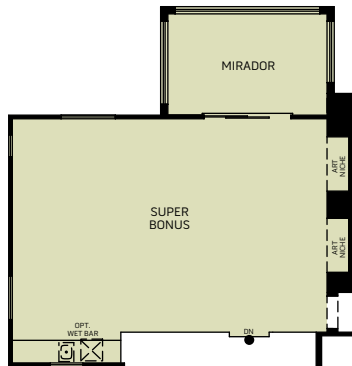


D

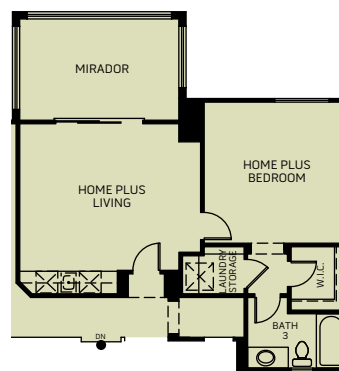
Two-Story • 2,996 Sq. Ft. • 3-5 Bedrooms • 3.5 - 4.5 Baths • Formal Dining
• 3-Bay Garage



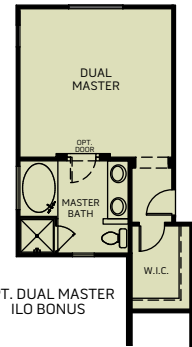
OPT. BEDROOM 5
ILO O.T.B.



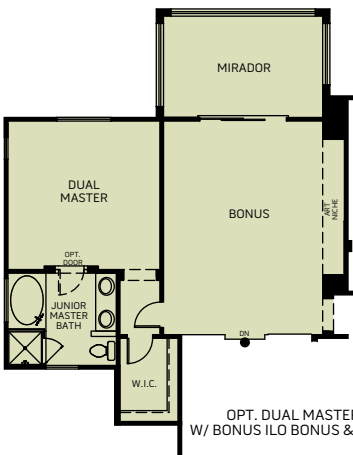
OPT. SUPER BONUS
ILO O.T.B.



OPT. HOME PLUS
ILO O.T.B. & BEDROOM SUITE
(LAUNDRY OPT.)



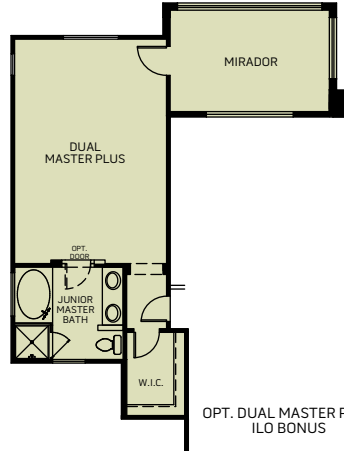
OPT. DUAL MASTER
ILO BONUS



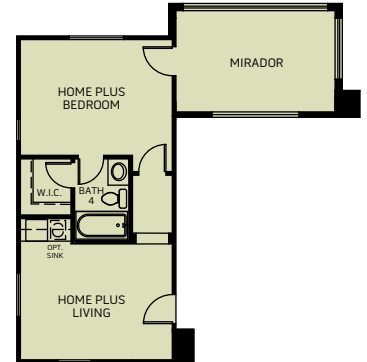
OPT. DUAL MASTER
W/ BONUS ILO BONUS & O.T.B.



OPT. BEDROOM 4 + TECH
ILO BONUS



OPT. DUAL MASTER PLUS
ILO BONUS



OPT. HOME PLUS 2
ILO BONUS