

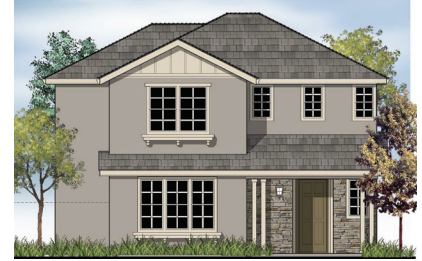
PARADISO - PLAN 2



A

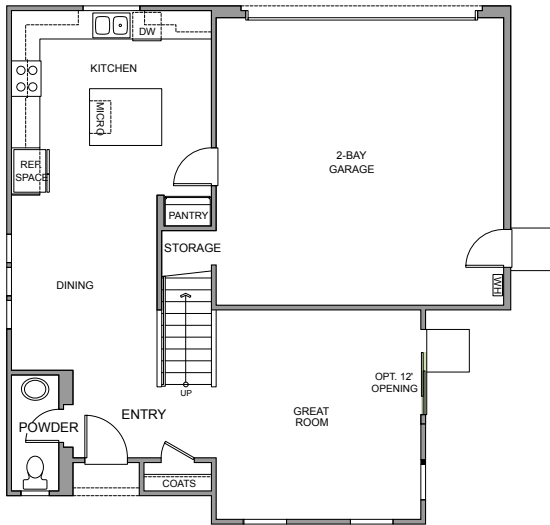


B

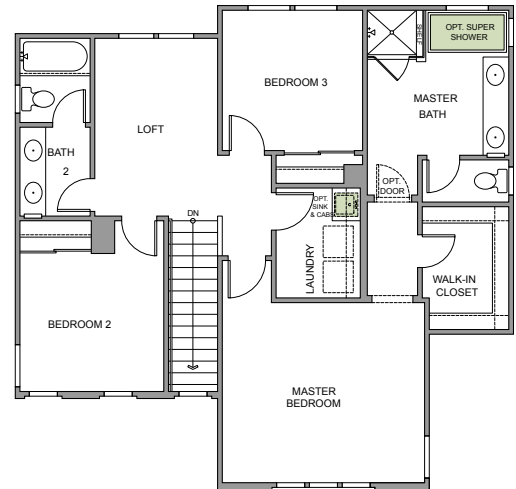


C

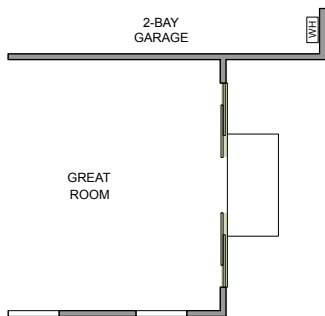
Two-Story • 1,717 Sq. Ft. • 3 Bedrooms • 2.5 Bathrooms Loft •
Great Room • Dining • 2-Bay Garage



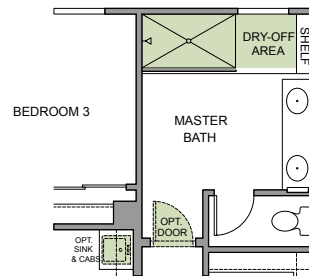
FIRST FLOOR



SECOND FLOOR



OPTIONAL 12-FT OPENING
AT GREAT ROOM



OPTIONAL SUPER SHOWER
AT MASTER BATH



WoodsideHomes.com



Woodside Homes reserves the right to change floor plans, features, elevations, prices, materials and specifications without notice. All square footages and measurements are approximate. Renderings are artist's conceptions only. Please see Sales Professional for full details. Ofi

140 Colner Circle
Folsom, CA 95630
877-231-0059 or 916-597-4079
Kathryn.Hoisington@woodsidehomes.com