

Waterford

Two-story • 3,039 Finished Sq. Ft. • 4,555 Total Sq. Ft. • 4-8 Bedrooms • 3-4 Baths • Living Room
Guest Bedroom and Bath • Loft • Opt Bonus Room • 2 Car With Storage Bay



A



B



D



**WATERS
EDGE**



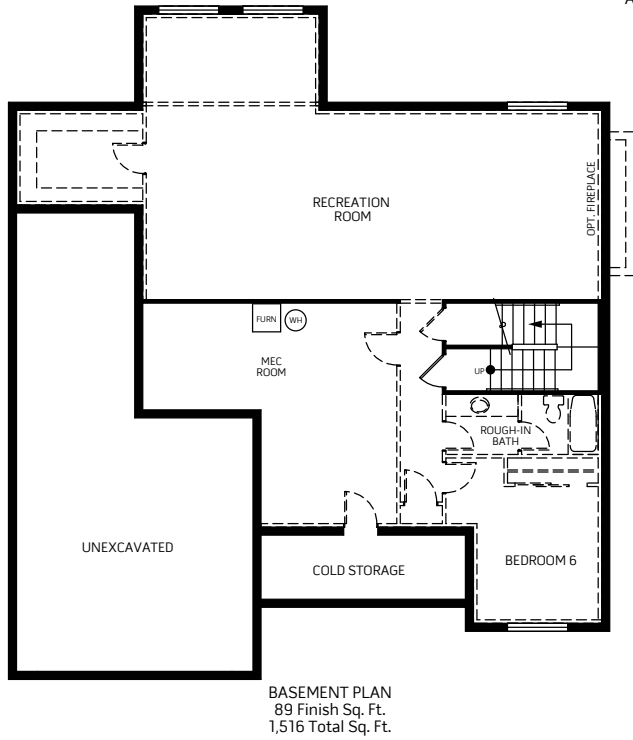
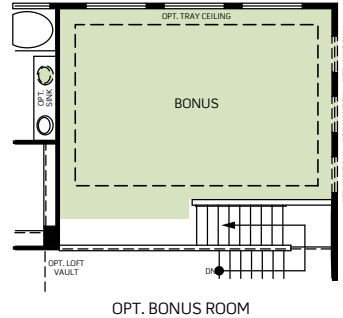
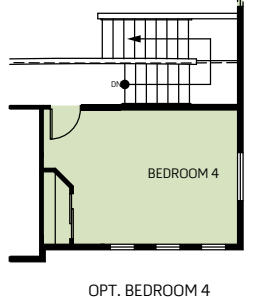
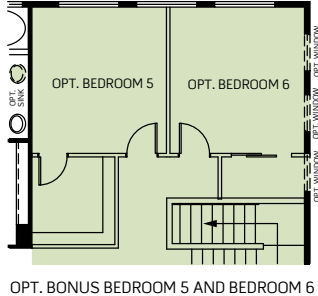
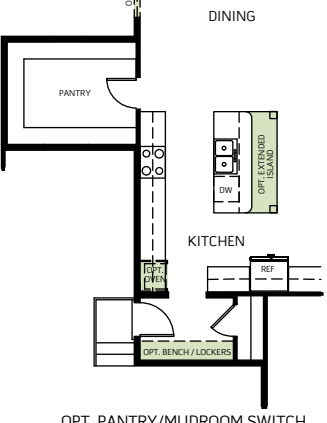
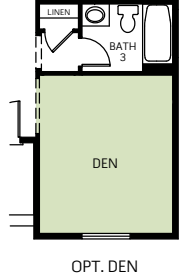
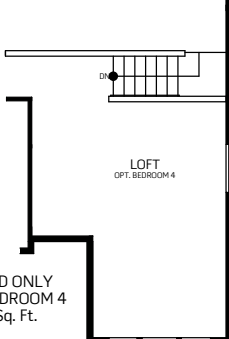
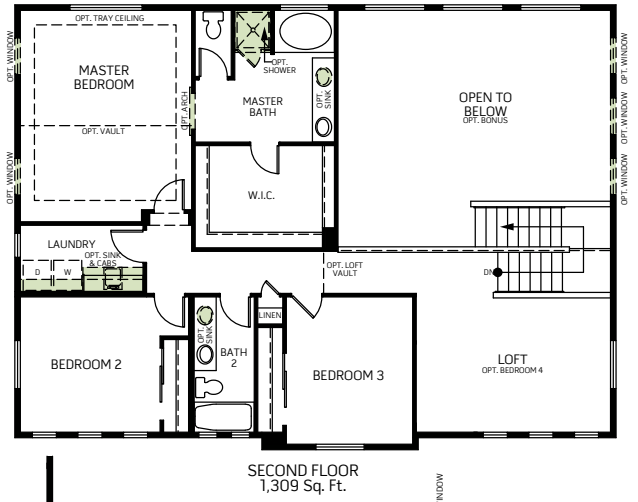
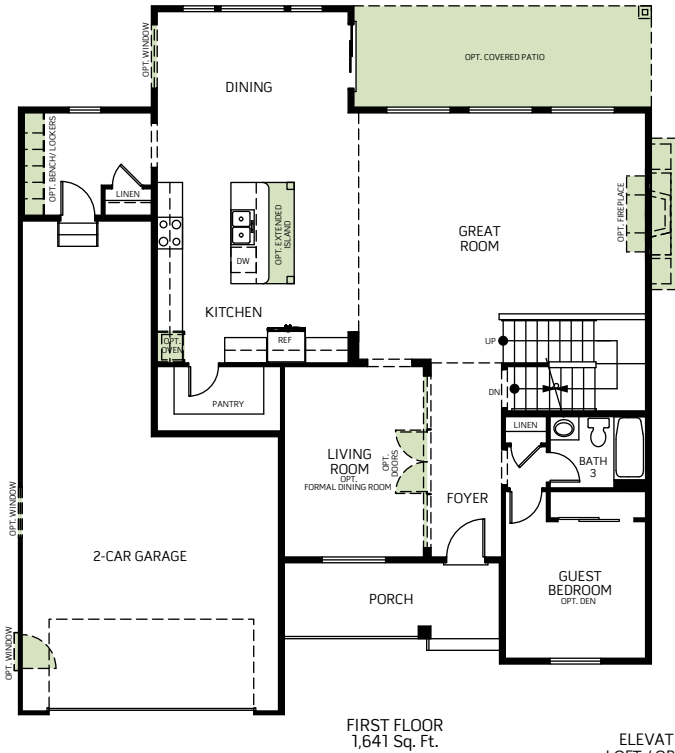
WoodsideHomes.com
106 East 580 North, Vineyard, UT 84058



Woodside Homes reserves the right to change elevations, specifications, materials and prices without notice. All square footages are approximate. Window location, porches, ceiling heights and room dimensions vary per elevation. The availability of certain options is subject to construction status and schedule. Optional features may be predetermined and included at additional cost on select homes. Renderings are artist's conception only. Rev. 01/17

Waterford

Two-story • 3,039 Finished Sq. Ft. • 4,555 Total Sq. Ft. • 4-8 Bedrooms • 3-4 Baths • Living Room
Guest Bedroom and Bath • Loft • Opt Bonus Room • 2 Car With Storage Bay



ELEVATION D ONLY
LOFT / OPT BEDROOM 4
Adds: 96 Sq. Ft.



Woodside Homes reserves the right to change elevations, specifications, materials and prices without notice. All square footages are approximate. Window location, porches, ceiling heights and room dimensions vary per elevation. The availability of certain options is subject to construction status and schedule. Optional features may be predetermined and included at additional cost on select homes. Renderings are artist's conception only. Rev. 01/17