

**Mcintosh IV**

Two-story • 2,793 Finished Sq. Ft. • 4,095 Total Sq. Ft. • 4-8 Bedrooms • 2.5-5 Baths • Living Room  
Den • Opt Guest Bedroom • Opt Bonus Room • Opt Bed 5 with Bath • 3 Car Garage



A



B



D



**WATERS  
EDGE**



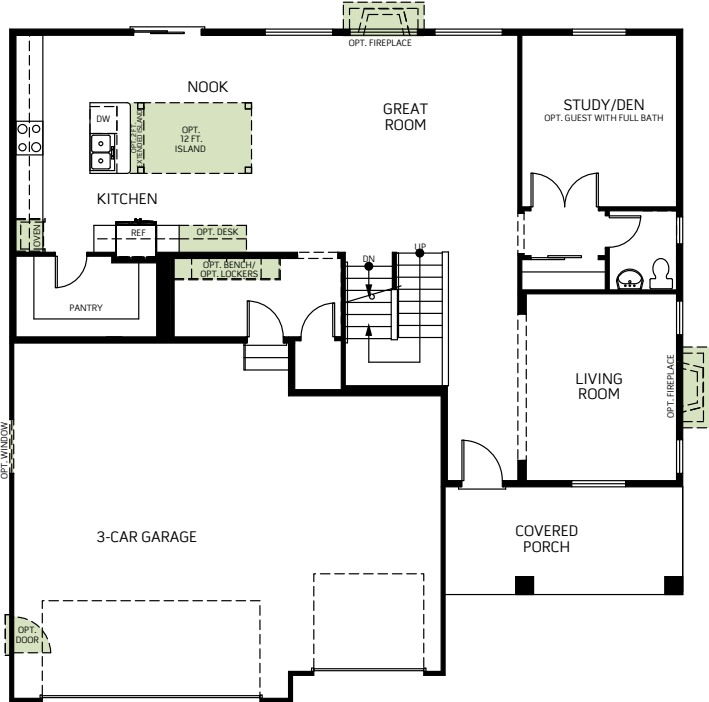
WoodsideHomes.com  
106 East 580 North, Vineyard, UT 84058



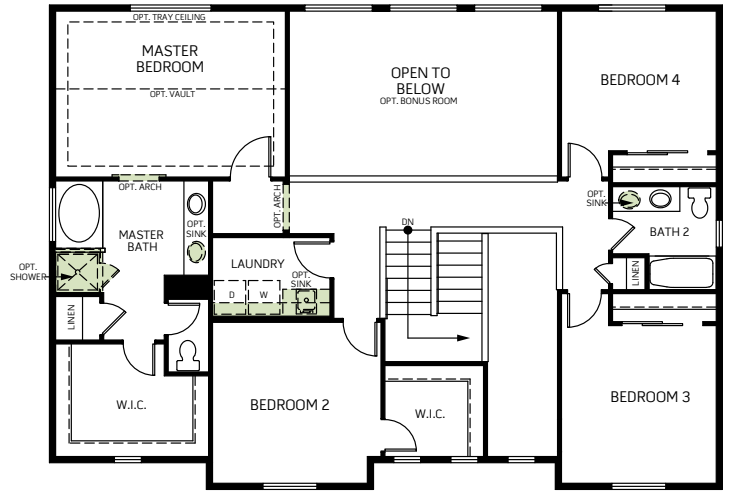
Woodside Homes reserves the right to change elevations, specifications, materials and prices without notice. All square footages are approximate. Window location, porches, ceiling heights and room dimensions vary per elevation. The availability of certain options is subject to construction status and schedule. Optional features may be predetermined and included at additional cost on select homes. Renderings are artist's conception only. Rev. 10/16

**Mcintosh**

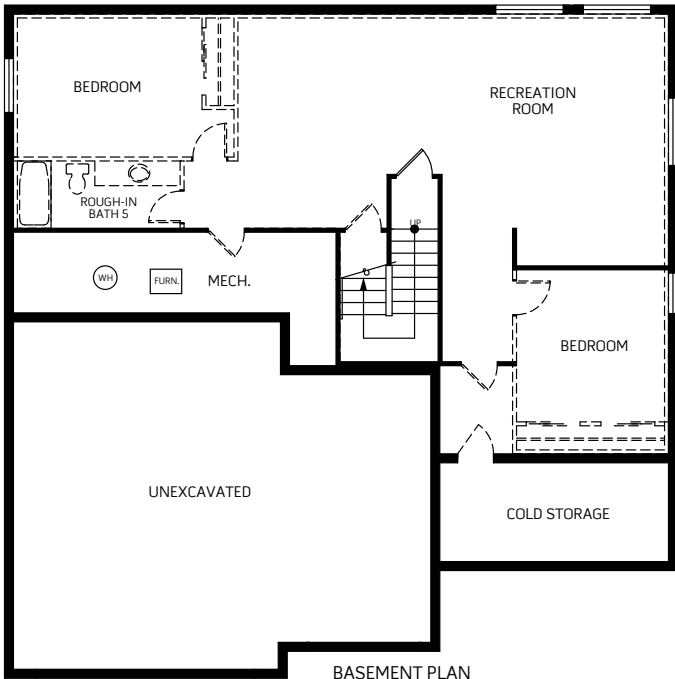
Two-story • 2,793 Finished Sq. Ft. • 4,095 Total Sq. Ft. • 4-8 Bedrooms • 2.5-5 Baths • Living Room Den • Opt Guest Bedroom • Opt Bonus Room • Opt Bed 5 with Bath • 3 Car Garage



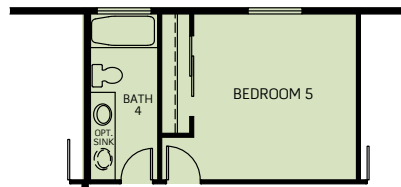
FIRST FLOOR  
1,402 Sq. Ft.



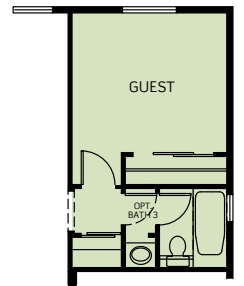
SECOND FLOOR  
1,332 Sq. Ft.



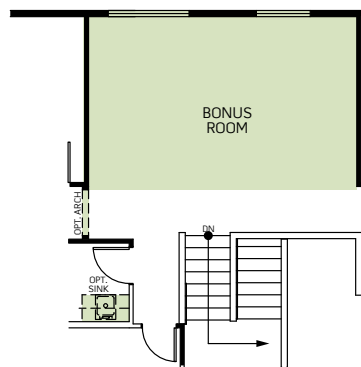
BASEMENT PLAN  
59 Finished Sq. Ft.  
1,302 Unfinished Sq. Ft.



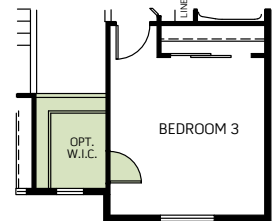
OPT. BEDROOM 5



OPT. GUEST WITH FULL BATH



OPT. BONUS ROOM



OPT. WALK IN CLOSET



**WATERS  
EDGE**



WoodsideHomes.com  
106 East 580 North, Vineyard, UT 84058



Woodside Homes reserves the right to change elevations, specifications, materials and prices without notice. All square footages are approximate. Window location, porches, ceiling heights and room dimensions vary per elevation. The availability of certain options is subject to construction status and schedule. Optional features may be predetermined and included at additional cost on select homes. Renderings are artist's conception only. Rev. 10/16