

## TIMBERLAKE/6450



A



B



C

One-Story • 3,061 Sq. Ft. • 4 Bedrooms • 2.5 Baths  
Great Room • Dining Room • Den • Patio • 3-Bay Garage



FIRST FLOOR



Woodside Homes reserves the right to change elevations, specifications, materials and prices without notice. All square footage are approximate. Window location, porches, ceiling heights and room dimensions vary per elevation. The availability of certain options is subject to construction status and schedule. Optional features may be predetermined and included at additional cost on select homes. Renderings are artist's conception only. 05/2018



WoodsideHomes.com

Annette.Anello@WoodsideHomes.com CA

BRE #01373422

(661) 589-3985

## TIMBERLAKE/6450

### OPTIONS



A

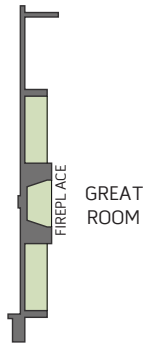


B

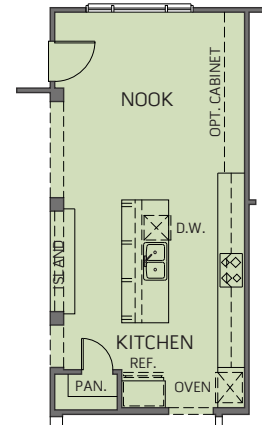


C

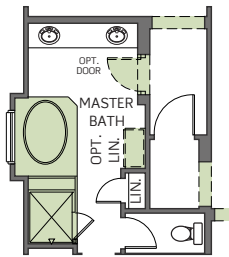
One-Story • 3,061 Sq. Ft. • 4 Bedrooms • 2.5 Baths  
Great Room • Dining Room • Den • Patio • 3-Bay Garage



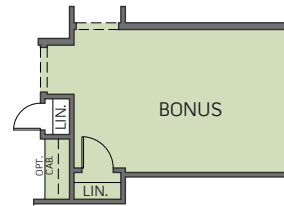
OPTIONAL FIREPLACE



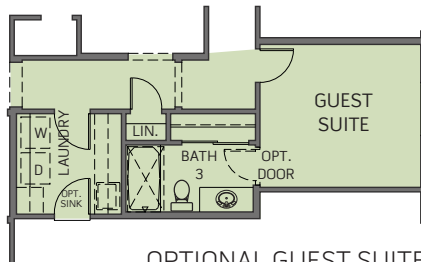
OPTIONAL ALTERNATE KITCHEN



OPTIONAL DECK-MOUNT TUB AT MASTER BATH



OPTIONAL BONUS ROOM IN LIEU OF BEDROOM 4



OPTIONAL GUEST SUITE W/ BATH 3 IN LIEU OF BEDROOM 4