

**Thornbury / 5036**



**Ranch (A)**

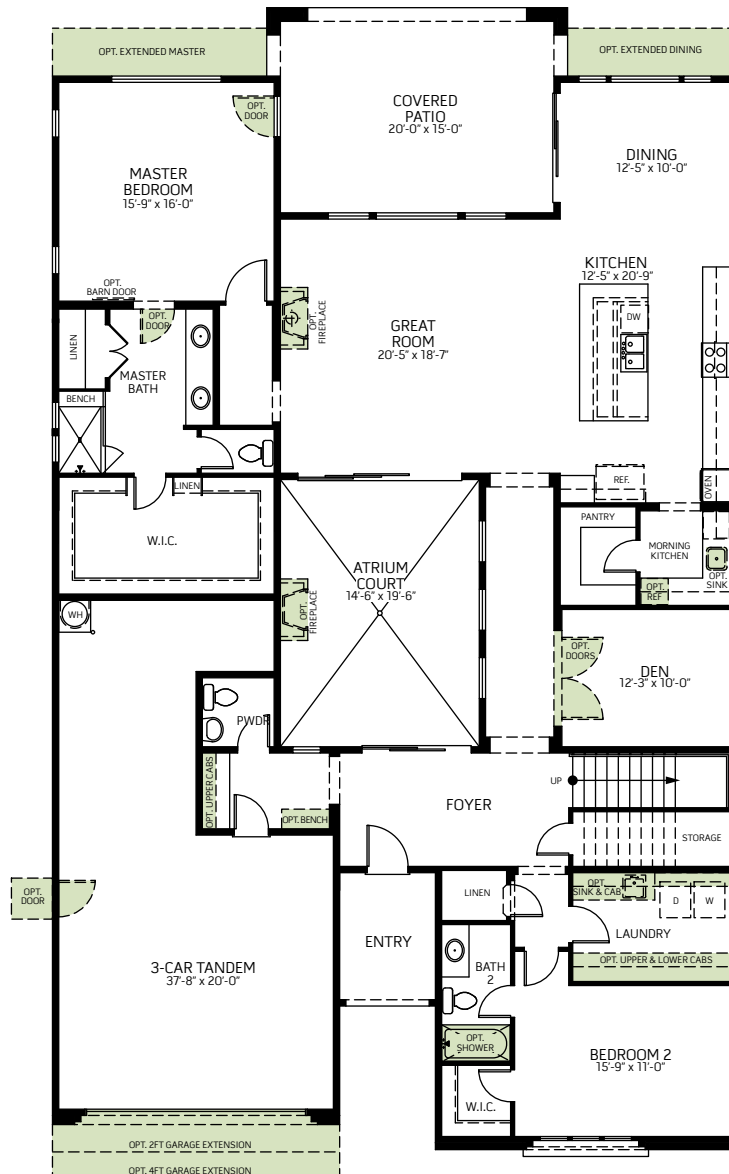


**Craftsman (B)**

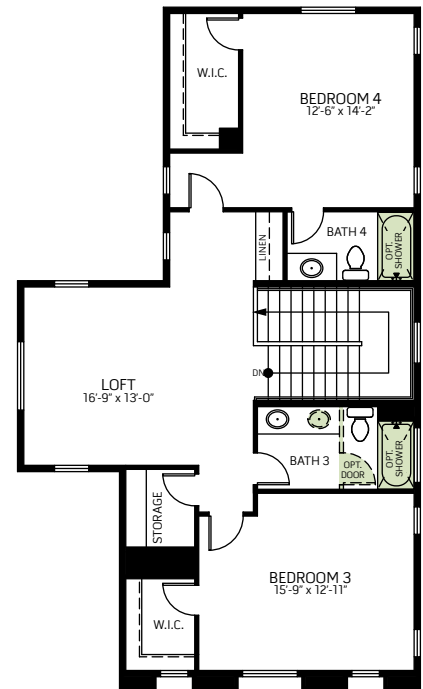


**Cottage (C)**

Two-Story • 3,633 Sq. Ft. • 4 Bedrooms • 4.5 Baths • Den • Great Room • Kitchen with Island • Walk-in Pantry • Dining • Downstairs Laundry • Loft • Covered Patio • 3-Car Tandem with Storage



**FIRST FLOOR**



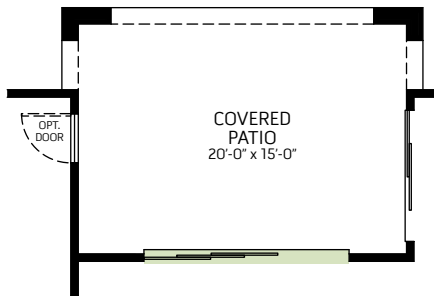
**SECOND FLOOR**

Woodside Homes reserves the right to change floor plans, maps, prices, and specifications without notice. Prices are subject to change without notice. The model information listed, including availability, floor plans, elevations, features, and other information are subject to change. Model home interior decorating, landscaping, fencing, and other amenities are for display purposes only. All renderings, floor plans, and maps are artist conceptions and are not intended to be an actual depiction of the buildings, fencing, driveways, or landscaping. Optional features may be included at additional cost and are subject to construction cut-off dates. All square foot measurements, elevations, features, and floor plans are approximate. This advertisement is for illustration purposes only and not part of a legal contract. Please see Sales Representative for full details, and additional information about options shown dashed on base floor plan. Woodside Homes Sales AZ, LLC. 04/2018

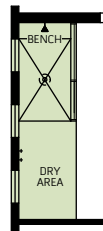


**Thornbury / 5036**

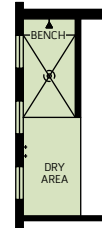
**OPTIONS**



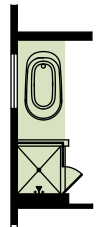
OPTIONAL MULTI-SLIDE DOOR AT GREAT ROOM



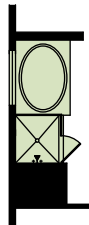
OPTIONAL EXTENDED SHOWER WITH GLASS



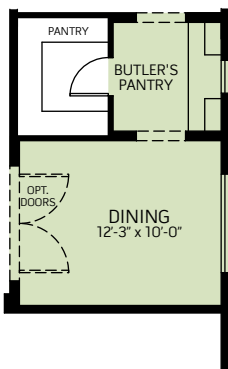
OPTIONAL EXTENDED SHOWER WITH WALL



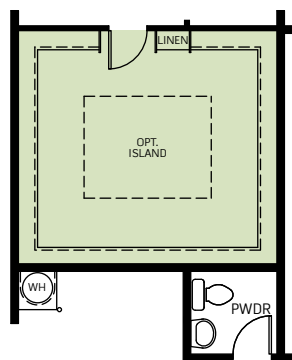
OPTIONAL FREE STANDING TUB



OPTIONAL SEPARATE TUB/SHOWER



OPTIONAL DINING WITH BUTLER'S PANTRY



OPTIONAL LUXURY WALK-IN CLOSET



OPTIONAL BEDROOM 5 ILO LOFT