

**Stonehaven IV**

Two-story • 2,188 Finished Sq. Ft. • 3-5 Bedrooms • 2.5-3 Baths • Living Room • Dining Room • Upstairs Loft  
Opt. Guest Bedroom & Bath • Opt. Extended Great Room • 2 Car Tandem Garage • Opt. 3 Car Garage



A



B



C



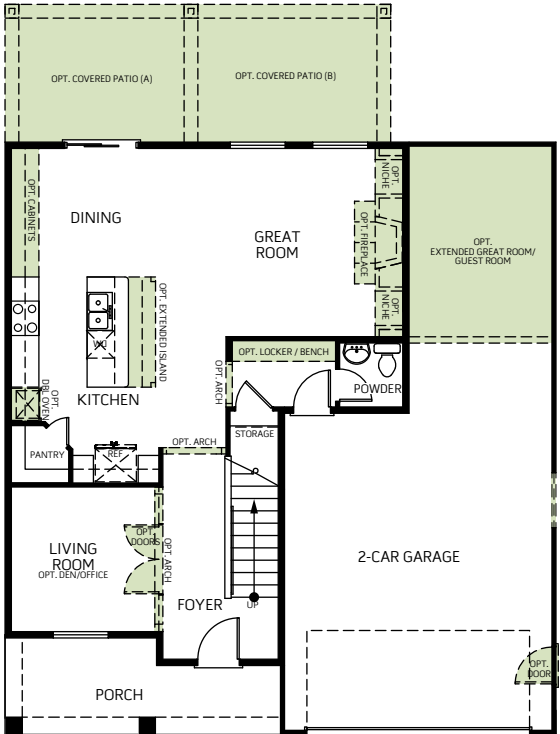
D

Woodside Homes reserves the right to change elevations, specifications, materials and prices without notice. All square footages are approximate. Window location, porches, ceiling heights and room dimensions vary per elevation. The availability of certain options is subject to construction status and schedule. Optional features may be predetermined and included at additional cost on select homes. Renderings are artist's conception only. Rev. 01/18

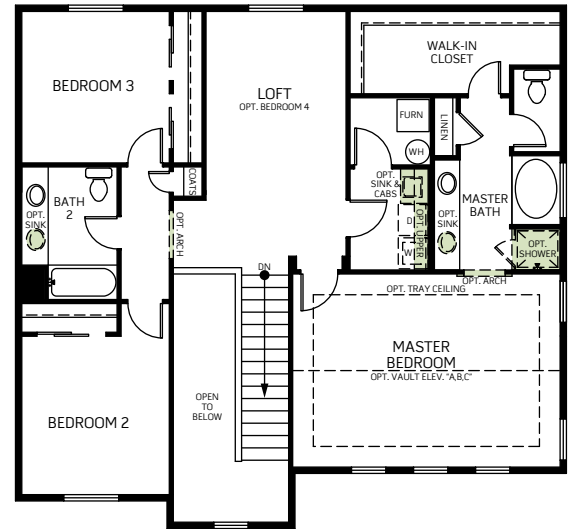


**Stonehaven IV**

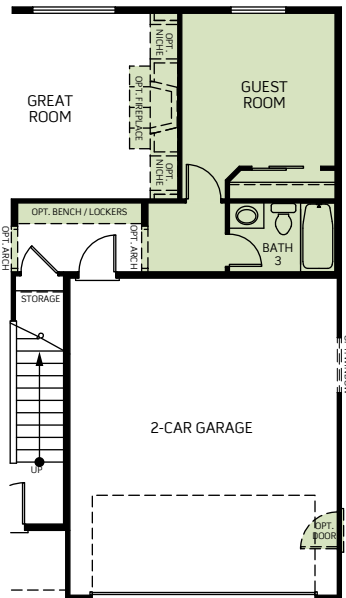
Two-story • 2,188 Finished Sq. Ft. • 3-5 Bedrooms • 2.5-3 Baths • Living Room • Dining Room • Upstairs Loft  
Opt. Guest Bedroom & Bath • Opt. Extended Great Room • 2 Car Tandem Garage • Opt. 3 Car Garage



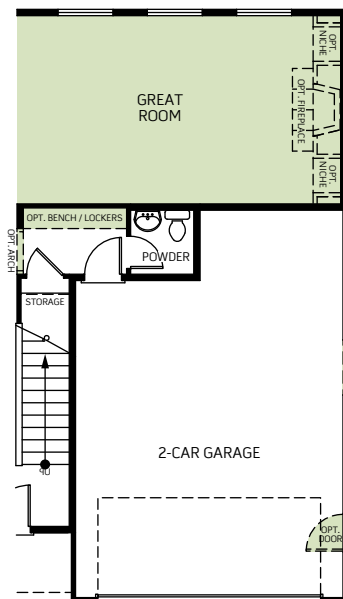
FIRST FLOOR  
927 Sq. Ft.



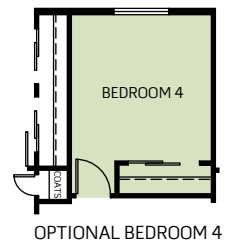
SECOND FLOOR  
1,261 Sq. Ft.



OPT. GUEST ROOM WITH BATH  
Adds: 210 Sq. Ft.



OPT. EXTENDED GREAT ROOM  
Adds: 156 Sq. Ft.



OPTIONAL BEDROOM 4

Woodside Homes reserves the right to change elevations, specifications, materials and prices without notice. All square footages are approximate. Window location, porches, ceiling heights and room dimensions vary per elevation. The availability of certain options is subject to construction status and schedule. Optional features may be predetermined and included at additional cost on select homes. Renderings are artist's conception only. Rev. 01/18

