

Sagecrest

One-story • 2,082 Finished Sq. Ft. • 4,096 Total Sq. Ft. • 3-6 Bedrooms • 2.5-3.5 Baths
Opt. Den • Opt. Covered Patio • 2 Car Garage



A



B



C

Woodside Homes reserves the right to change elevations, specifications, materials and prices without notice. All square footages are approximate. Window location, porches, ceiling heights and room dimensions vary per elevation. The availability of certain options is subject to construction status and schedule. Optional features may be predetermined and included at additional cost on select homes. Renderings are artist's conception only. Rev. 02/18

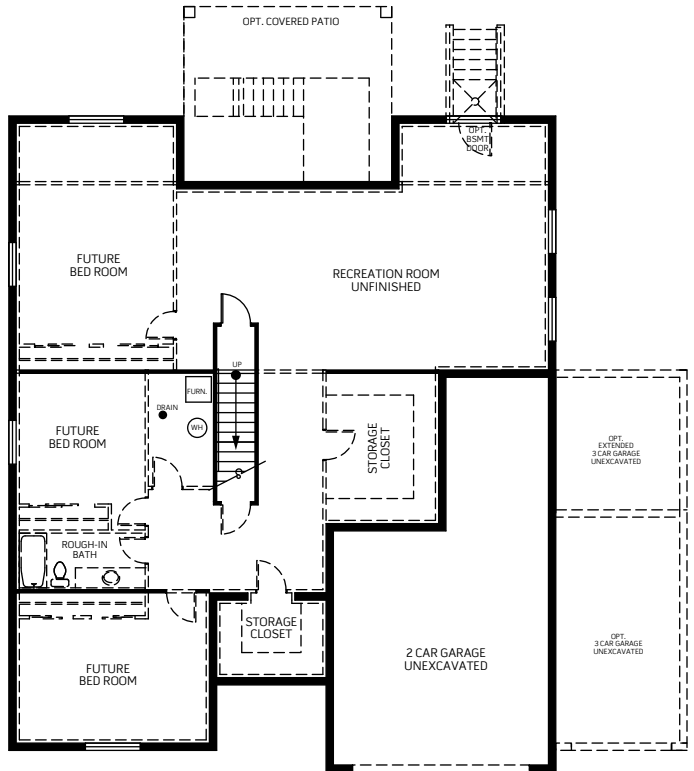


Sagecrest

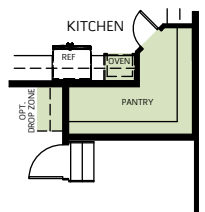
One-story • 2,082 Finished Sq. Ft. • 4,096 Total Sq. Ft. • 3-6 Bedrooms • 2.5-3.5 Baths
Opt. Den • Opt. Covered Patio • 2 Car Garage



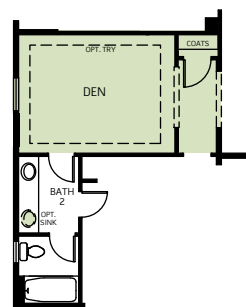
FIRST FLOOR
2,082' Sq. Ft.



BASEMENT PLAN
2,014 Sq. Ft. Unfinished



OPT. EXTENDED PANTRY



OPT. DEN



Woodside Homes reserves the right to change elevations, specifications, materials and prices without notice. All square footages are approximate. Window location, porches, ceiling heights and room dimensions vary per elevation. The availability of certain options is subject to construction status and schedule. Optional features may be predetermined and included at additional cost on select homes. Renderings are artist's conception only. Rev. 02/18



WoodsideHomes.com
3985 South 5600 West Hooper, UT 84315