

Rushmore / V352



Spanish (A)

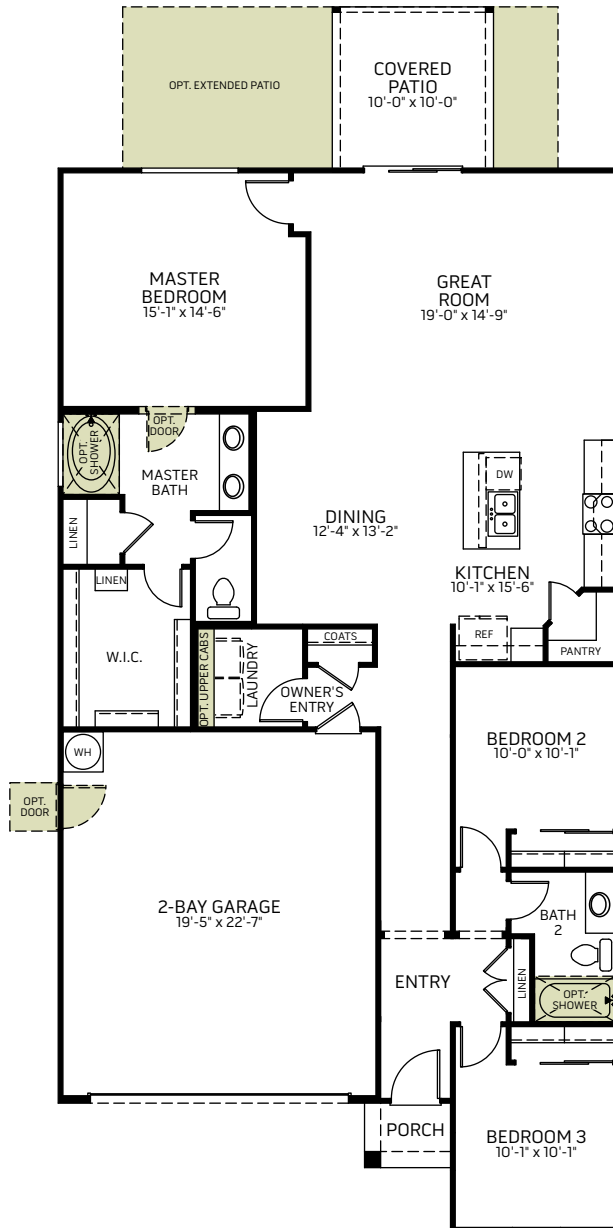


Santa Fe (B)



Tuscan (C)

Single-Story • 1,661 Sq. Ft. • 3 Bedrooms • 2 Baths • Great Room • Kitchen with Dining • Walk-in Pantry • Laundry • Owner's Entry • Covered Patio • 2-Bay Garage



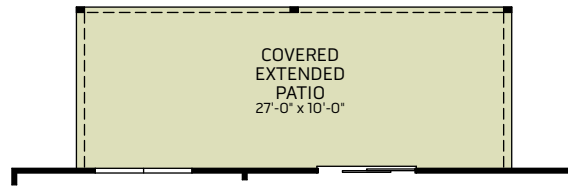
FLOOR PLAN

Woodside Homes reserves the right to change floor plans, maps, prices, and specifications without notice. Prices are subject to change without notice. The model information listed, including availability, floor plans, elevations, features, and other information are subject to change. Model home interior decorating, landscaping, fencing, and other amenities are for display purposes only. All renderings, floor plans, and maps are artist conceptions and are not intended to be an actual depiction of the buildings, fencing, driveways, or landscaping. Optional features may be included at additional cost and are subject to construction cut-off dates. All square foot measurements, elevations, features, and floor plans are approximate. This advertisement is for illustration purposes only and not part of a legal contract. Please see Sales Representative for full details, and additional information about options shown dashed on base floor plan. Woodside Homes Sales AZ, LLC. 03/2020

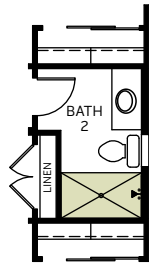


Rushmore / V352

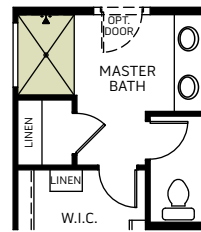
OPTIONS



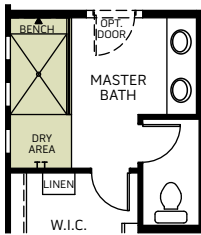
OPTIONAL EXTENDED PATIO



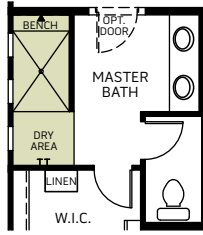
OPTIONAL SHOWER AT BATH 2



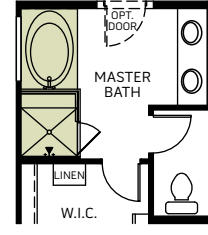
OPTIONAL SHOWER AT MASTER BATH



OPTIONAL EXTENDED SHOWER WITH GLASS



OPTIONAL EXTENDED SHOWER WITH WALL



OPTIONAL SEPARATE TUB/SHOWER

Woodside Homes reserves the right to change floor plans, maps, prices, and specifications without notice. Prices are subject to change without notice. The model information listed, including availability, floor plans, elevations, features, and other information are subject to change. Model home interior decorating, landscaping, fencing, and other amenities are for display purposes only. All renderings, floor plans, and maps are artist conceptions and are not intended to be an actual depiction of the buildings, fencing, driveways, or landscaping. Optional features may be included at additional cost and are subject to construction cut-off dates. All square foot measurements, elevations, features, and floor plans are approximate. This advertisement is for illustration purposes only and not part of a legal contract. Please see Sales Representative for full details, and additional information about options shown dashed on base floor plan. Woodside Homes Sales AZ, LLC. 03/2020



#SantolinaAtSouthMountain

WoodsideHomes.com/Arizona