

**RESIDENCE IV / 2521**



I

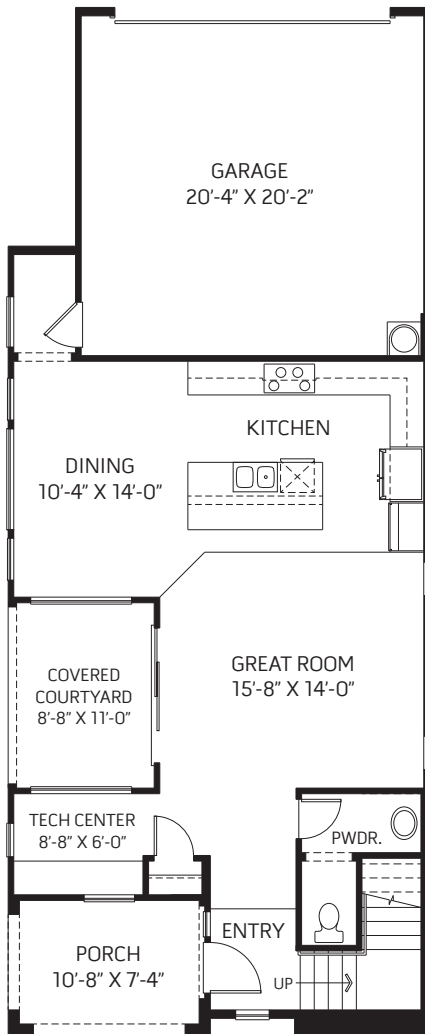


II

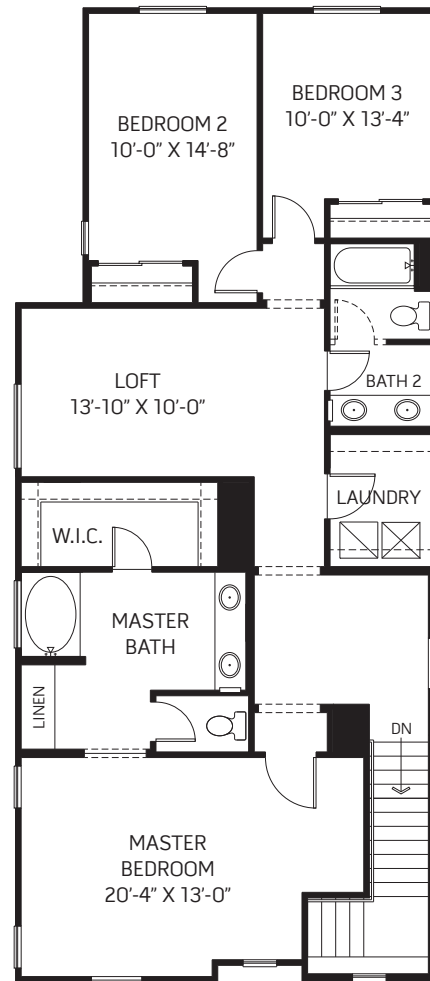


III

Two-Story • 2,129 Sq. Ft. • 3 Bedrooms • 2.5 Baths • Great Room • Kitchen • Dining Room  
Second Floor Laundry • Tech Center • Loft • Covered Courtyard • 2 Car Garage



FIRST FLOOR



SECOND FLOOR



Woodside Homes reserves the right to change floor plans, maps, prices, and specifications without notice. Prices are subject to change without notice. The model information listed, including availability, floor plans, elevations, features, and other information are subject to change. Model home interior decorating, landscaping, fencing, and other amenities are for display purposes only. All renderings, floor plans, and maps are artist conceptions and are not intended to be an actual depiction of the buildings, fences, driveways, or landscaping. Optional features may be included at additional cost and are subject to construction cut-off dates. All square foot measurements, elevations, features, and floor plans are approximate. This advertisement is for illustration purposes only and a part of a legal contract. Please see Sales Representative for full details, and additional information about options shown dashed on base floor plan. Woodside Homes Sales AZ, LLC, 9/2016



**RESIDENCE IV / 2521**

**OPTIONS**



**IV**



**V – Shown with Optional Brick**



**VI**

Two-Story ▪ 2,129 Sq. Ft. ▪ 3 Bedrooms ▪ 2.5 Baths ▪ Great Room ▪ Kitchen ▪ Dining Room  
Second Floor Laundry ▪ Tech Center ▪ Loft ▪ Covered Courtyard ▪ 2 Car Garage

