

**Poppy/4010**



**A**

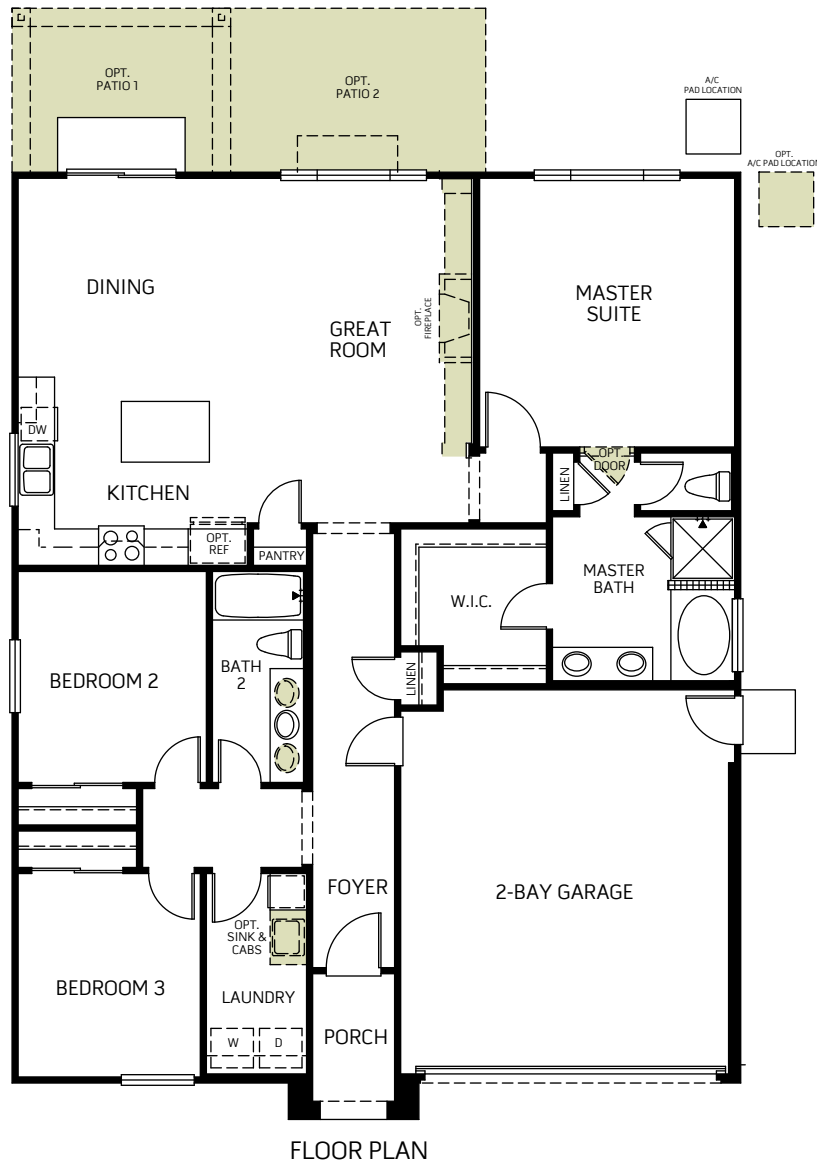


**B**



**C**

One Story • 1,571 Sq. Ft • 3 - Bedrooms • 2 Baths  
Great Room • Kitchen with Island • Dining • 2-Bay Garage



Woodside Homes reserves the right to change elevations, specifications, materials and prices without notice. All square footage are approximate. Window location, porches, ceiling heights and room dimensions vary per elevation. The availability of certain options is subject to construction status and schedule. Optional features may be predetermined and included at additional cost on select homes. Renderings are artist's conception only. 12/2019



WoodsideHomes.com

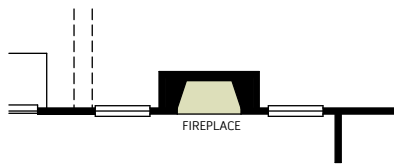
3440 S. Kennedy St.  
Visalia, CA 93292  
Heather.Mendonca@woodsidehomes.com  
Tamera.Tessmann@woodsidehomes.com

**Poppy/4010**

**OPTIONS**



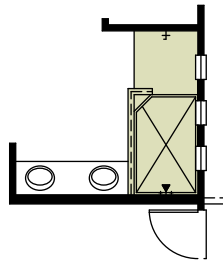
**A**



OPTIONAL FIREPLACE AT GREAT ROOM



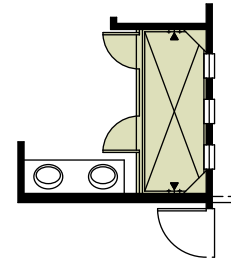
**B**



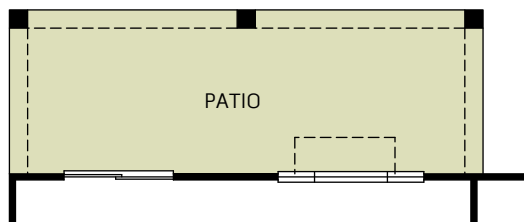
OPTIONAL SHOWER AT MASTER BATH



**C**



OPTIONAL SUPER SHOWER AT MASTER BATH



OPTIONAL PATIO 2



Woodside Homes reserves the right to change elevations, specifications, materials and prices without notice. All square footage are approximate. Window location, porches, ceiling heights and room dimensions vary per elevation. The availability of certain options is subject to construction status and schedule. Optional features may be predetermined and included at additional cost on select homes. Renderings are artist's conception only. 12/2019



WoodsideHomes.com

3440 S. Kennedy St.  
Visalia, CA 93292

Heather.Mendonca@woodsidehomes.com  
Tamera.Tessmann@woodsidehomes.com