

PONDEROSA/7060



A

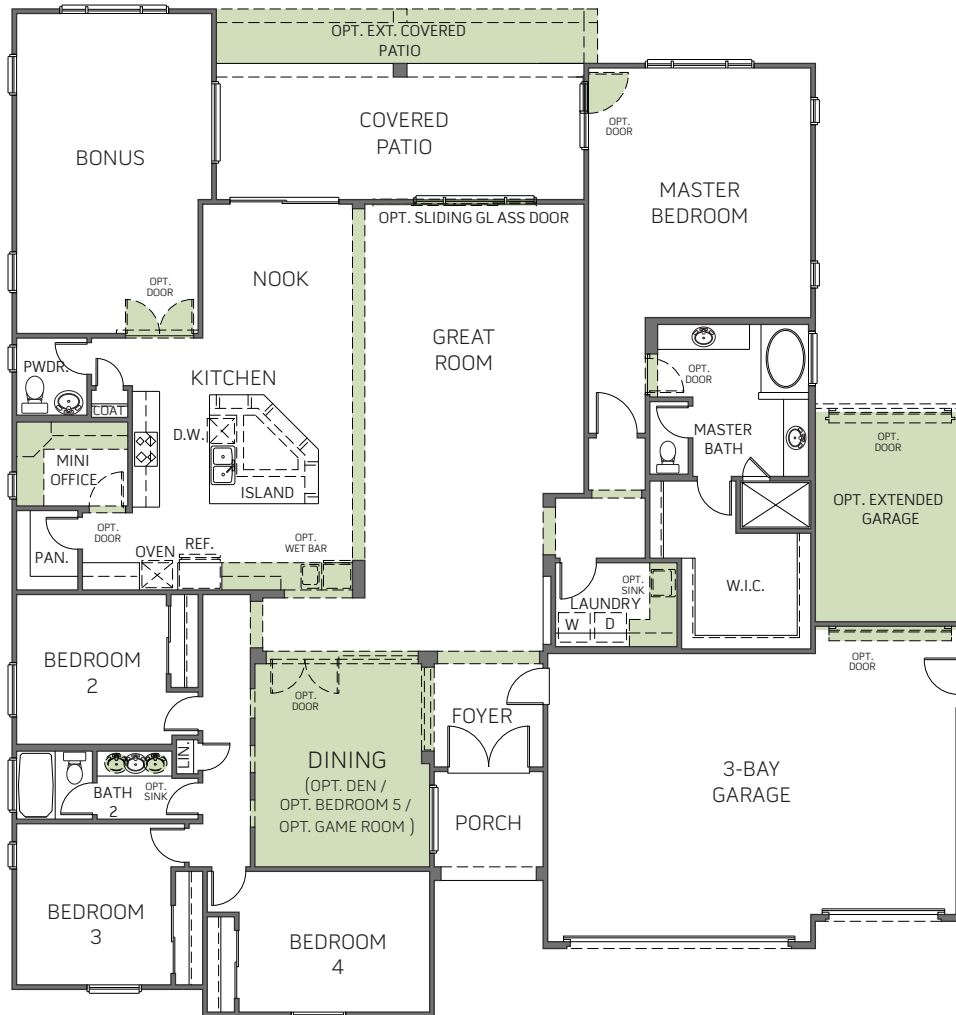


B



C

One-Story • 3,218 Sq. Ft. • 4 Bedrooms • 2.5 Baths • Great Room
Dining Room • Bonus • Patio • 3-Bay Garage



FIRST FLOOR



Woodside Homes reserves the right to change elevations, specifications, materials and prices without notice. All square footage are approximate. Window location, porches, ceiling heights and room dimensions vary per elevation. The availability of certain options is subject to construction status and schedule. Optional features may be predetermined and included at additional cost on select homes. Renderings are artist's conception only. 05/2018



WoodsideHomes.com

Gina.Alfaro@woodsidehomes.com
Erika.Ramirez@WoodsideHomes.com

(661) 589-3985

PONDEROSA/7060

OPTIONS



A

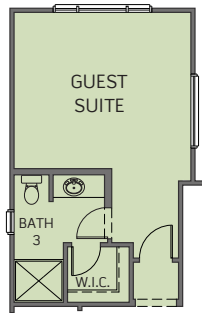


B



C

One-Story • 3,218 Sq. Ft. • 4 Bedrooms • 2.5 Baths • Great Room
Dining Room • Bonus • Patio • 3-Bay Garage



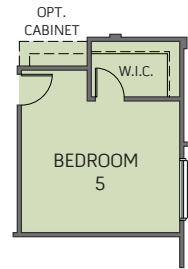
OPTIONAL GUEST SUITE
W/ BATH 3 IN LIEU OF BONUS ROOM



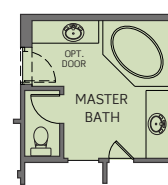
OPTIONAL
FIREPLACE



OPTIONAL GAME ROOM
IN LIEU OF DINING



OPTIONAL BEDROOM 5
IN LIEU OF DINING



OPTIONAL
DECK-MOUNT TUB