

**PLAN 4 (PRELIMINARY)**



**A: Monterey**



**B: Americana**

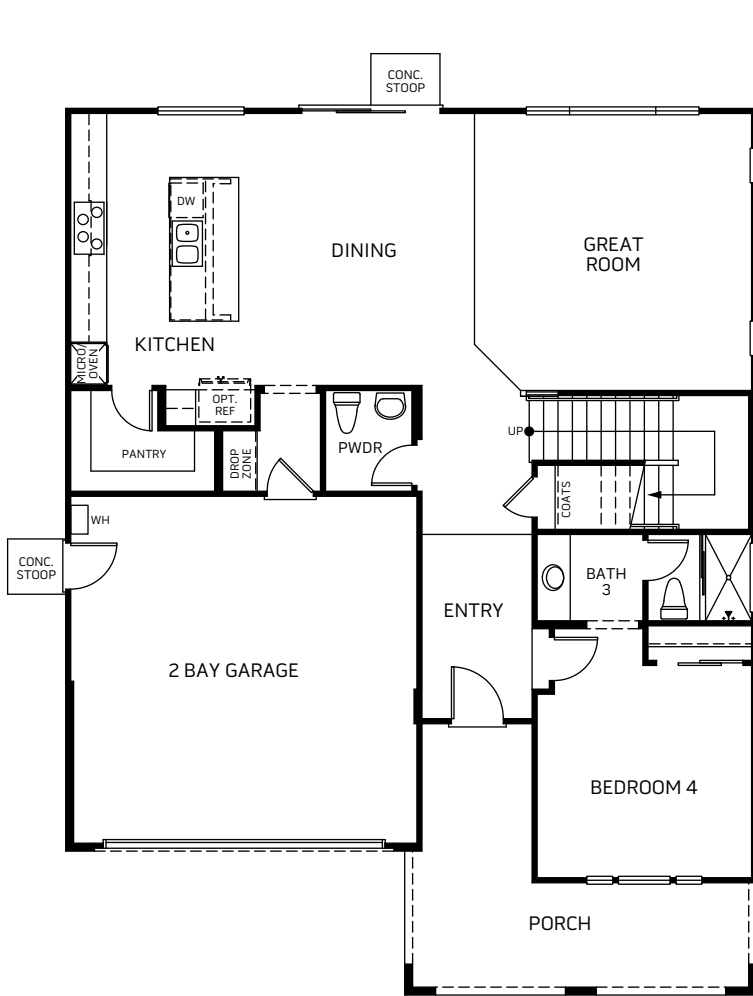


**C: Coastal Cottage**

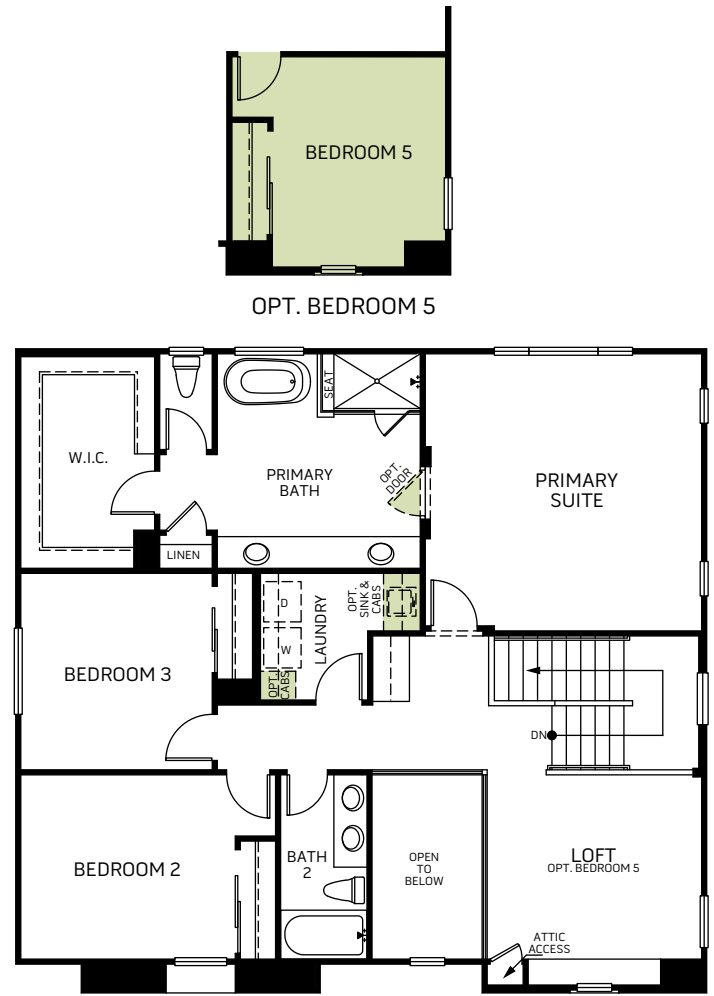


**D: West Coast Contemporary**

Two Story • 2,607 Sq. Ft. • 4 Bedrooms • 3.5 Baths  
Great Room • Kitchen with Island • Dining • Loft • 2-Bay Garage



FIRST FLOOR



SECOND FLOOR



Woodside Homes reserves the right to change elevations, specifications, materials and prices without notice. All square footages are approximate. Window location, porches, ceiling heights and room dimensions vary per elevation. The availability of certain options is subject to construction status and schedule. Optional features may be predetermined and included at additional cost on select homes. Renderings are artist's conception only. REV 09/20



WoodsideHomes.com/Norcal  
1408 Hammond Drive, Woodland, CA 95776  
MyNewHome-NorCal@WoodsideHomes.com  
877-231-0059 or 916-597-4079