

**PLAN 3 (PRELIMINARY)**



**A: Modern Spanish**



**B: Wine Country**

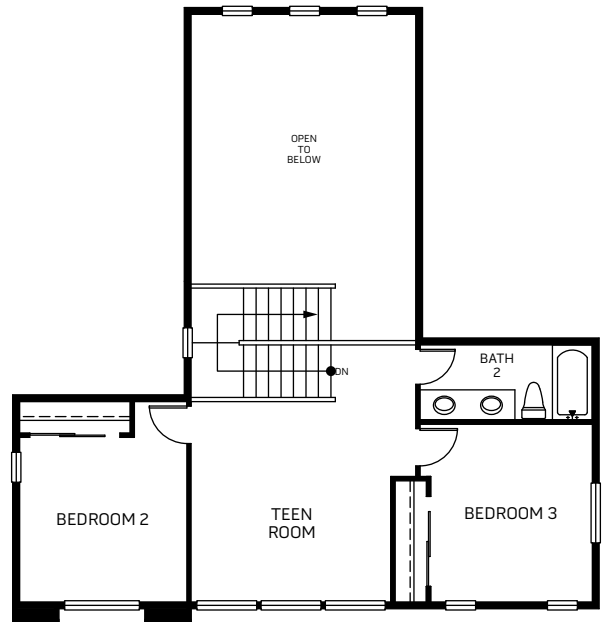


**D: Mid-Century Modern**

Two Story • 2,479 Sq. Ft. • 4-5 Bedrooms • 3 Baths  
Great Room • Kitchen with Island • Dining • 2-Bay Garage



FIRST FLOOR



SECOND FLOOR

Woodside Homes reserves the right to change elevations, specifications, materials and prices without notice. All square footages are approximate. Window location, porches, ceiling heights and room dimensions vary per elevation. The availability of certain options is subject to construction status and schedule. Optional features may be predetermined and included at additional cost on select homes. Renderings are artist's conception only. REV 09/20



WoodsideHomes.com/Norcal  
Rancho Cordova, CA 95742  
MyNewHome-NorCal@WoodsideHomes.com  
877-231-0059 or 916-597-4079

**PLAN 3 (PRELIMINARY)**

**OPTIONS**



**A: Modern Spanish**

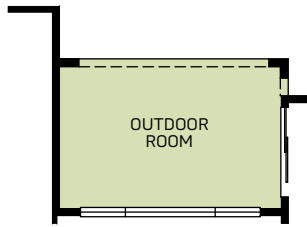


**B: Wine Country**



**D: Mid-Century Modern**

Two Story • 2,479 Sq. Ft. • 4-5 Bedrooms • 3 Baths  
Great Room • Kitchen with Island • Dining • 2-Bay Garage



OPT. OUTDOOR ROOM



OPT. BEDROOM 5