

**BROADWAY PLAN 1**



**A**

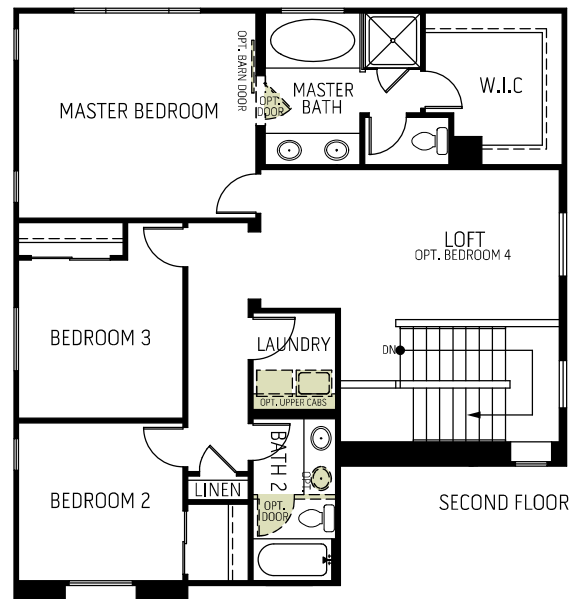
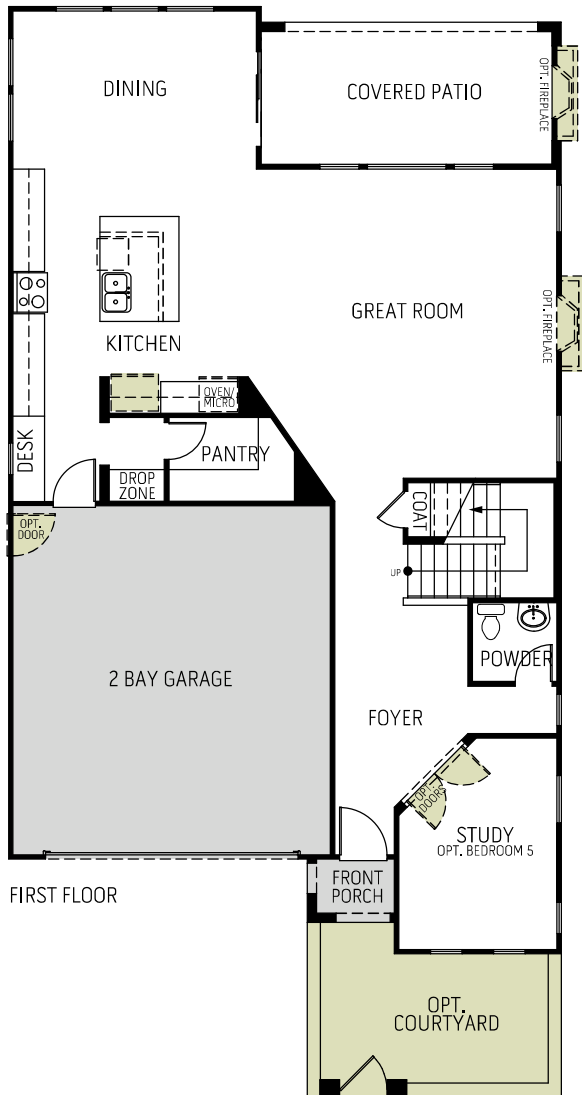


**B**



**C**

Two Story | 2,367 Sq Ft | 3 to 5 Bedrooms | 2.5 to 3 Baths | Study | Loft | Covered Patio | 2 Bay Garage



WoodsideHomes.com/Nevada

Offers, incentives, and Woodside Homes contributions are subject to terms, conditions, and restrictions, which may include the requirement of using preferred lenders and closing agents. Some incentives could affect the loan amount. Woodside Homes reserves the right to change or withdraw any offer or incentive at any time. Woodside Homes reserves the right to change floor plans, features, elevations, prices, materials and specifications without notice. Optional features may be predetermined and included at additional cost to Buyer and are subject to construction cut-off dates. All square footages and measurements are approximate. Images are an artist's conception only. Persons pictured do not reflect racial or other demographic preferences. This advertisement is for illustration purposes only and is not part of a legally binding contract. Please see Sales Professional for full details. If you are working with a REALTOR or real estate agent, they must accompany and register you on your first visit. MAR2019

**BROADWAY PLAN 1**

**OPTIONAL FEATURES**



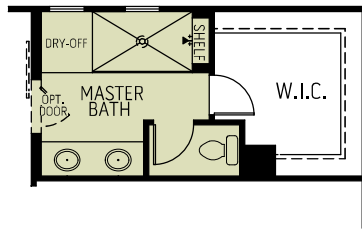
**A**



**B**



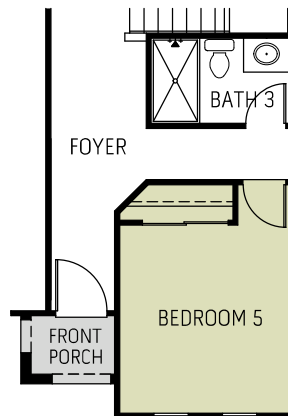
**C**



OPT. WALK-IN SHOWER  
AT MASTER



OPT. BEDROOM 4 ILO LOFT



OPT. BEDROOM 5 w/BATH 3  
ILO STUDY



WoodsideHomes.com/Nevada

Offers, incentives, and Woodside Homes contributions are subject to terms, conditions, and restrictions, which may include the requirement of using preferred lenders and closing agents. Some incentives could affect the loan amount. Woodside Homes reserves the right to change or withdraw any offer or incentive at any time. Woodside Homes reserves the right to change floor plans, features, elevations, prices, materials and specifications without notice. Optional features may be predetermined and included at additional cost to Buyer and are subject to construction cut-off dates. All square footages and measurements are approximate. Images are an artist's conception only. Persons pictured do not reflect racial or other demographic preferences. This advertisement is for illustration purposes only and is not part of a legally binding contract. Please see Sales Professional for full details. If you are working with a REALTOR or real estate agent, they must accompany and register you on your first visit. MAR2019