

PLAN 1939 (PRELIMINARY)



A

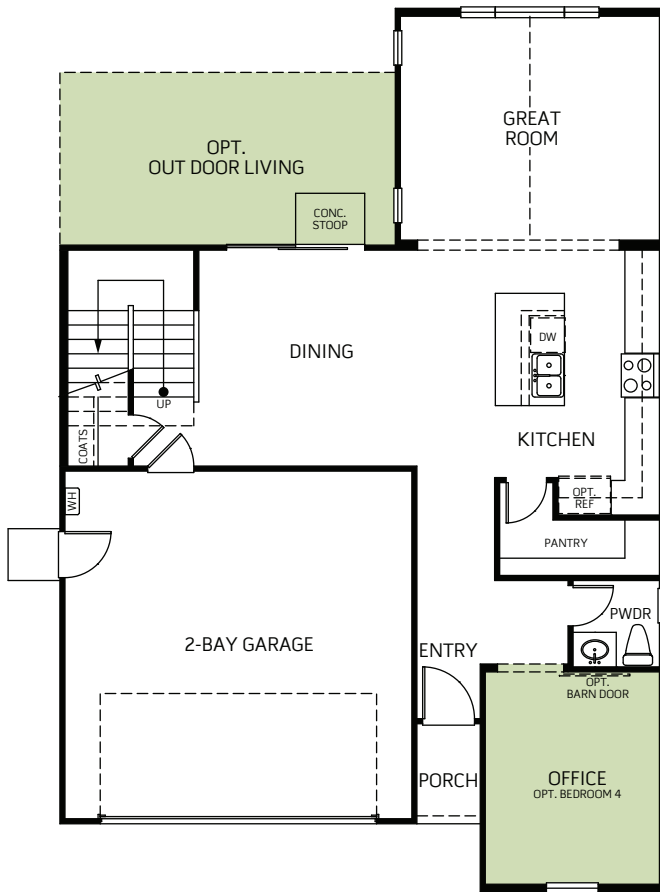


B



C

Two Story • 1,939 Sq. Ft. • 3 Bedrooms • 2.5 Baths
Great Room • Kitchen with Island • Study • Dining • Loft • 2-Bay Garage



FIRST FLOOR



SECOND FLOOR



Woodside Homes reserves the right to change floor plans, features, elevations, prices, materials and specifications without notice. All square footages and measurements are approximate. Please see Sales Professional for full details. 05/2017



WoodsideHomes.com

108 Pictor Lane
Roseville, CA 95747
877-231-0059 or 916-597-4079
Kathryn.Hoisington@woodsidehomes.com

PLAN 1939 (PRELIMINARY)



A

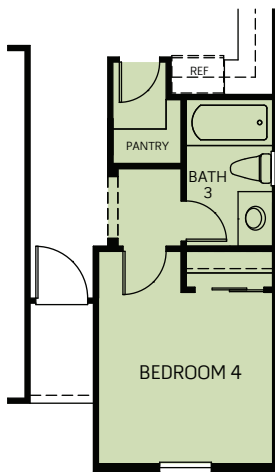


B

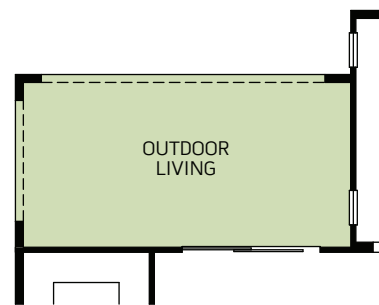


C

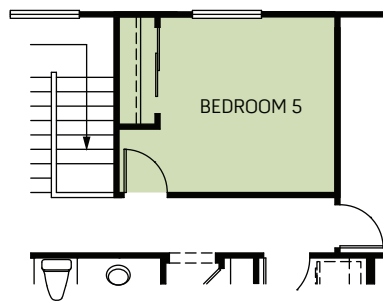
Two Story • 1,939 Sq. Ft. • 3 Bedrooms • 2.5 Baths
Great Room • Kitchen with Island • Study • Dining • Loft • 2-Bay Garage



OPT. BEDROOM 4 ILO OFFICE



OPT. OUTDOOR LIVING



OPT. BEDROOM 5 ILO LOFT