

PLAN 1726 (PRELIMINARY)



A. Modern Spanish

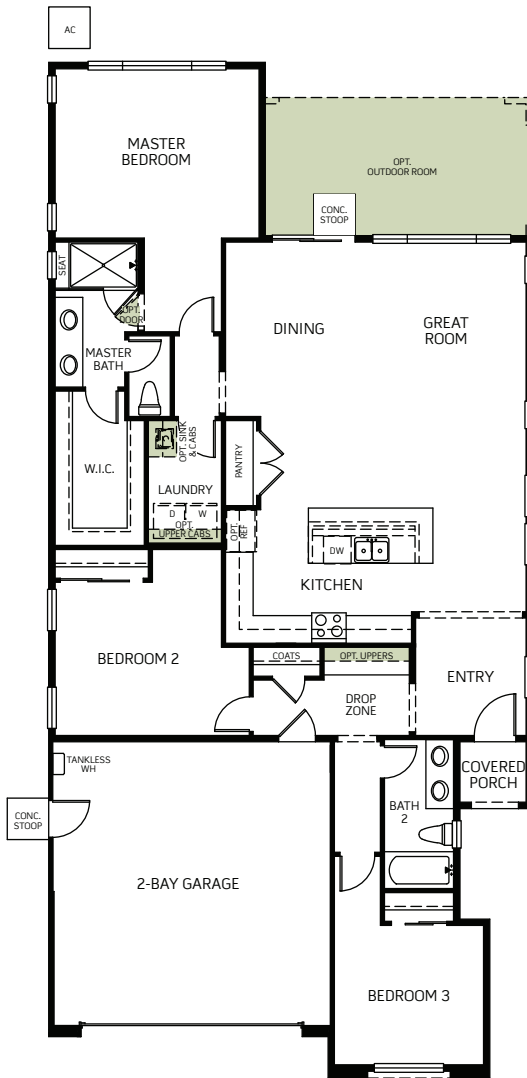


B. Mid-Century Modern

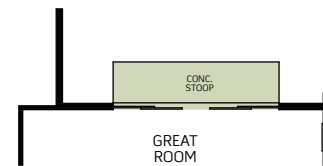


C. Modern Prairie

One Story • 1,726 Sq. Ft. • 3 Bedrooms • 2 Baths
Great Room • Kitchen with Island • Dining • 2-Bay Garage



FLOOR PLAN



OPT. CENTER-MEET SLIDING GLASS DOOR

Woodside Homes reserves the right to change elevations, specifications, materials and prices without notice. All square footages are approximate. Window location, porches, ceiling heights and room dimensions vary per elevation. The availability of certain options is subject to construction status and schedule. Optional features may be predetermined and included at additional cost on select homes. Renderings are artist's conception only.

