

**PLAN 4A (PRELIMINARY)**



**A: Mediterranean Revival**



**B: Farmhouse Victorian**

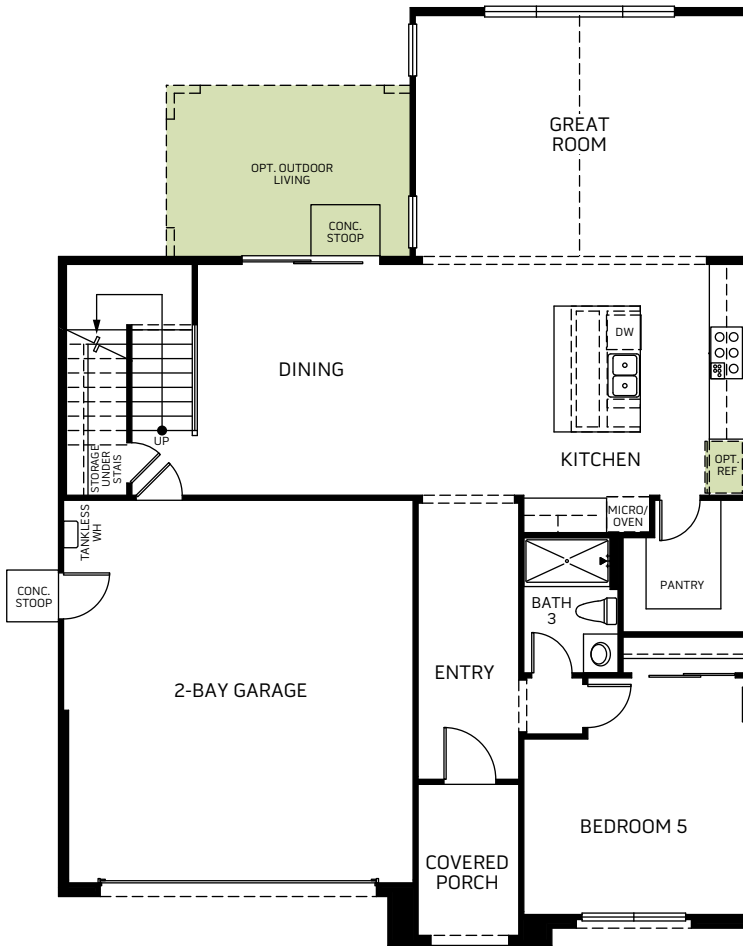


**C: European Country**



**D: Craftsman**

Two Story • 2,594 Sq. Ft. • 5 Bedrooms • 3 Baths  
Great Room • Kitchen with Island • Dining • Loft • 2-Bay Garage



FIRST FLOOR

SECOND FLOOR

Woodside Homes reserves the right to change elevations, specifications, materials and prices without notice. All square footages are approximate. Window location, porches, ceiling heights and room dimensions vary per elevation. The availability of certain options is subject to construction status and schedule. Optional features may be predetermined and included at additional cost on select homes. Renderings are artist's conception only. REV 09/20



WoodsideHomes.com/Norcal  
2275 Augusta Ave, Tracy, CA 95377  
MyNewHome-NorCal@WoodsideHomes.com  
877-231-0059 or 916-597-4079

**PLAN 4A (PRELIMINARY)**

**OPTION**



**A: Mediterranean Revival**



**B: Farmhouse Victorian**

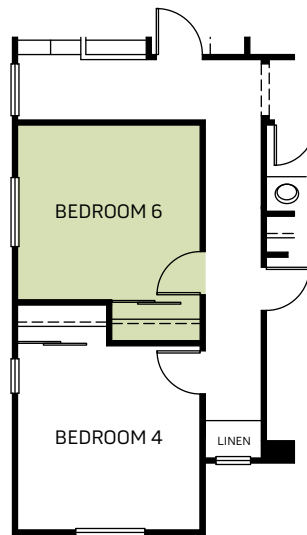


**C: European Country**



**D: Craftsman**

Two Story • 2,594 Sq. Ft. • 5 Bedrooms • 3 Baths  
Great Room • Kitchen with Island • Dining • Loft • 2-Bay Garage



OPTIONAL BEDROOM 6