

PLAN 2A (PRELIMINARY)



A: Mediterranean Revival



B: Farmhouse Victorian

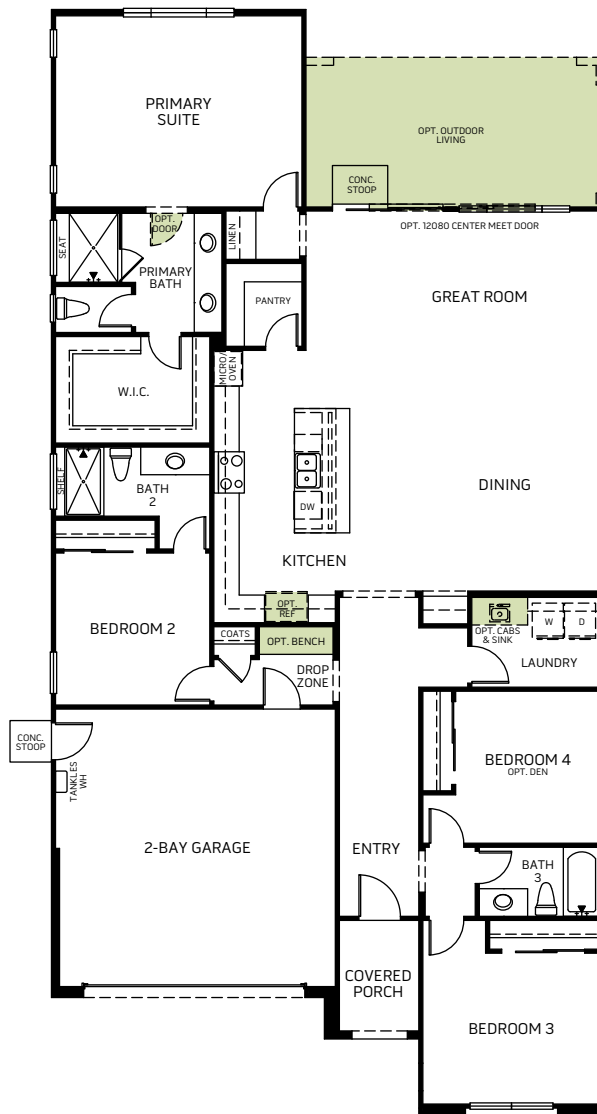


C: European Country

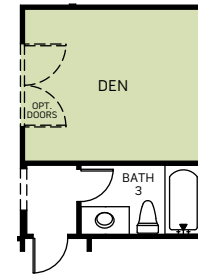


D: Craftsman

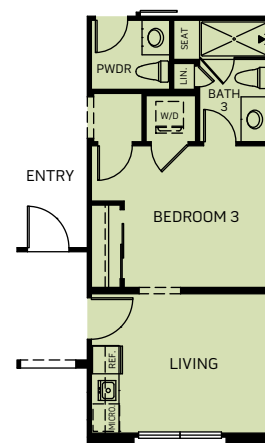
One Story • 2,197 Sq. Ft. • 4 Bedrooms • 3 Baths
 Great Room • Kitchen with Island • Dining • 2-Bay Garage



FLOOR PLAN



OPTIONAL DEN



OPTIONAL HOME PLUS



Woodside Homes reserves the right to change elevations, specifications, materials and prices without notice. All square footages are approximate. Window location, porches, ceiling heights and room dimensions vary per elevation. The availability of certain options is subject to construction status and schedule. Optional features may be predetermined and included at additional cost on select homes. Renderings are artist's conception only. REV 09/20



WoodsideHomes.com/Norcal
 2275 Augusta Ave, Tracy, CA 95377
 MyNewHome-NorCal@WoodsideHomes.com
 877-231-0059 or 916-597-4079