

MUIRFIELD/5007



A



B



C

One Story • 2,232-2,453 Sq. Ft. • 3 Bedrooms • 2.5 Baths
Great Room • Kitchen with Island • Dining • Nook • Den • 3-Bay Garage



FLOOR PLAN

Woodside Homes reserves the right to change elevations, specifications, materials and prices without notice. All square footages are approximate. Window location, porches, ceiling heights and room dimensions vary per elevation. The availability of certain options is subject to construction status and schedule. Optional features may be predetermined and included at additional cost on select homes. Renderings are artist's conception only.



MUIRFIELD/5007

OPTIONS



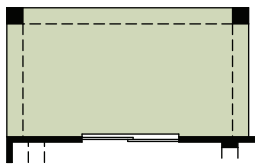
A



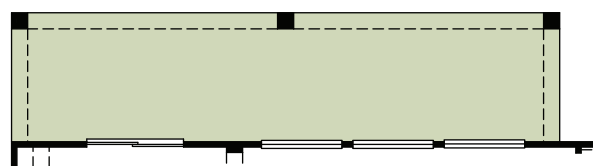
B



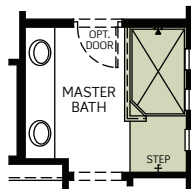
C



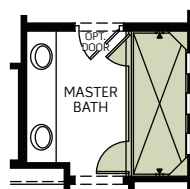
OPTIONAL PATIO



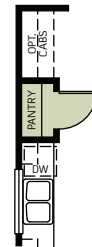
OPTIONAL EXTENDED PATIO



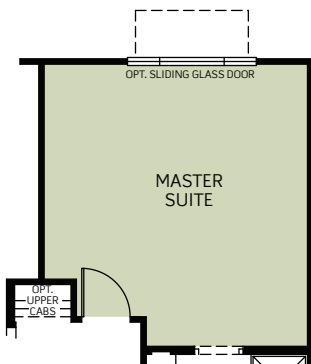
OPTIONAL SHOWER AT MASTER BATH



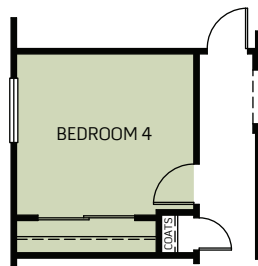
OPTIONAL SUPER SHOWER AT MASTER BATH



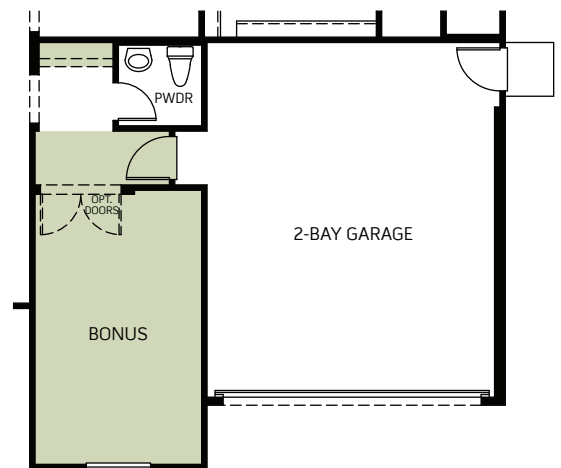
OPTIONAL BUILT-IN PANTRY



OPTIONAL EXTENDED MASTER SUITE



OPTIONAL BEDROOM 4 IN LIEU OF DEN



OPTIONAL BONUS IN LIEU OF 3RD BAY GARAGE



Woodside Homes reserves the right to change elevations, specifications, materials and prices without notice. All square footages are approximate. Window location, porches, ceiling heights and room dimensions vary per elevation. The availability of certain options is subject to construction status and schedule. Optional features may be predetermined and included at additional cost on select homes. Renderings are artist's conception only.

