

Marquis II

One-Story • 1,840 Finished Sq. Ft. • 3,561 Total Sq. Ft. • 3-7 Bedrooms • 2.5-3.5 Baths • Living Room
Opt. Den • Opt. Bay Windows • Opt. Covered Patio • 2 Car Garage



A



B



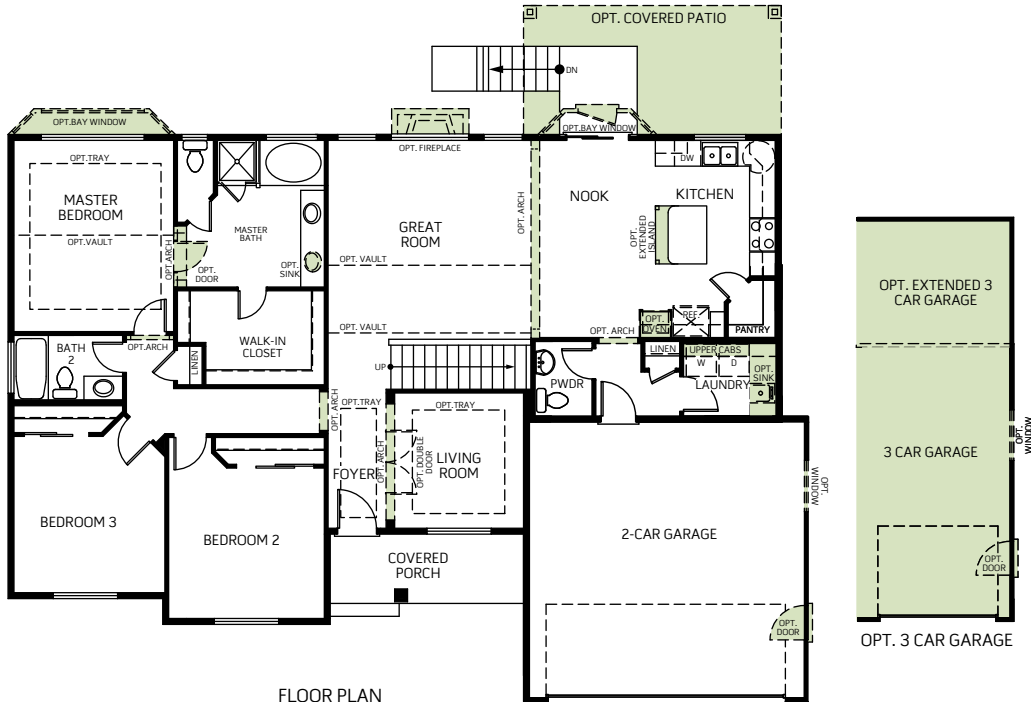
C

Woodside Homes reserves the right to change elevations, specifications, materials and prices without notice. All square footages are approximate. Window location, porches, ceiling heights and room dimensions vary per elevation. The availability of certain options is subject to construction status and schedule. Optional features may be predetermined and included at additional cost on select homes. Renderings are artist's conception only. Rev. 11/17

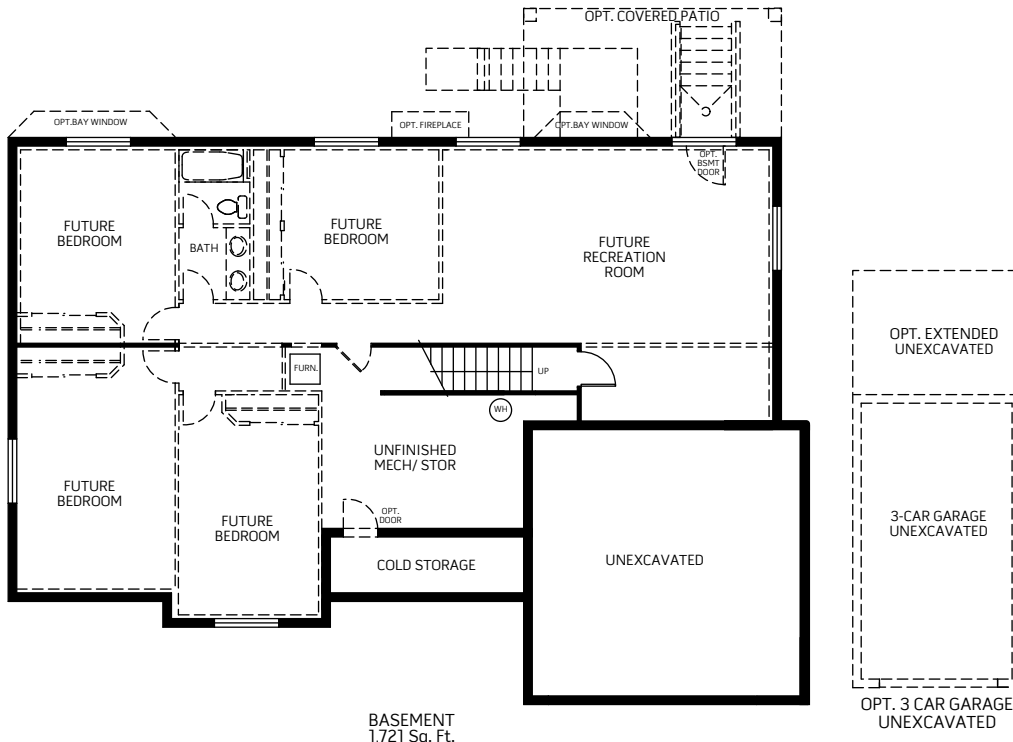


Marquis II

One-Story • 1,840 Finished Sq. Ft. • 3,561 Total Sq. Ft. • 3-7 Bedrooms • 2.5-3.5 Baths • Living Room
Opt. Den • Opt. Bay Windows • Opt. Covered Patio • 2 Car Garage



FLOOR PLAN
1,840 Sq. Ft.



BASEMENT
1,721 Sq. Ft.

Woodside Homes reserves the right to change elevations, specifications, materials and prices without notice. All square footages are approximate. Window location, porches, ceiling heights and room dimensions vary per elevation. The availability of certain options is subject to construction status and schedule. Optional features may be predetermined and included at additional cost on select homes. Renderings are artist's conception only. Rev. 11/17

