

PLAN 3 (PRELIMINARY)



A: Modern Spanish

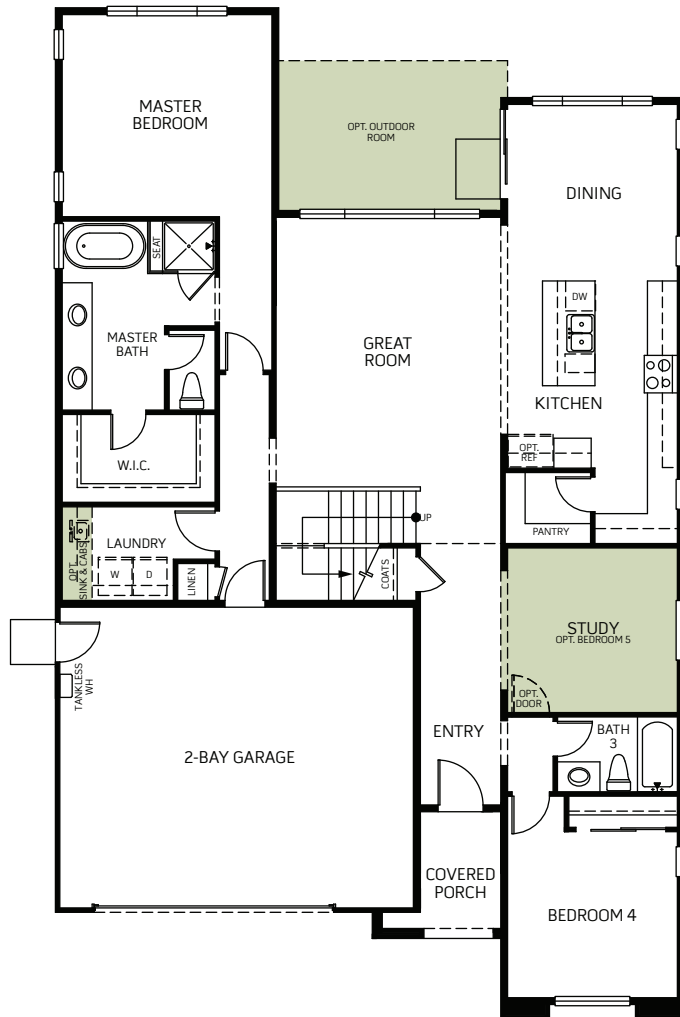


B: Wine Country

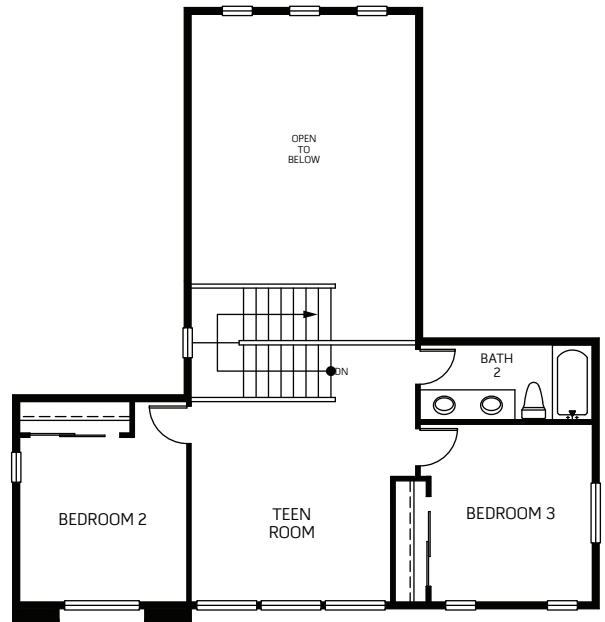


D: Mid-Century Modern

Two Story • 2,437 Sq. Ft. • 4-5 Bedrooms • 3 Baths
Great Room • Kitchen with Island • Dining • 2-Bay Garage



FIRST FLOOR



SECOND FLOOR

Woodside Homes reserves the right to change elevations, specifications, materials and prices without notice. All square footages are approximate. Window location, porches, ceiling heights and room dimensions vary per elevation. The availability of certain options is subject to construction status and schedule. Optional features may be predetermined and included at additional cost on select homes. Renderings are artist's conception only.



WoodsideHomes.com/Norcal
Rancho Cordova, CA 95742
CNonlinesales@woodsidehomes.com
877-231-0059 or 916-597-4079

PLAN 3 (PRELIMINARY)

OPTIONS



A: Modern Spanish

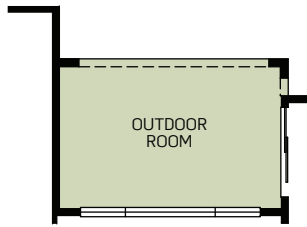


B: Wine Country



D: Mid-Century Modern

Two Story • 2,437 Sq. Ft. • 4-5 Bedrooms • 3 Baths
Great Room • Kitchen with Island • Dining • 2-Bay Garage



OPT. OUTDOOR ROOM



OPT. BEDROOM 5

Woodside Homes reserves the right to change elevations, specifications, materials and prices without notice. All square footages are approximate. Window location, porches, ceiling heights and room dimensions vary per elevation. The availability of certain options is subject to construction status and schedule. Optional features may be predetermined and included at additional cost on select homes. Renderings are artist's conception only.



WoodsideHomes.com/Norcal
Rancho Cordova, CA 95742
CNOlinesales@woodsidehomes.com
877-231-0059 or 916-597-4079