

**Lupine/4020**



**A**

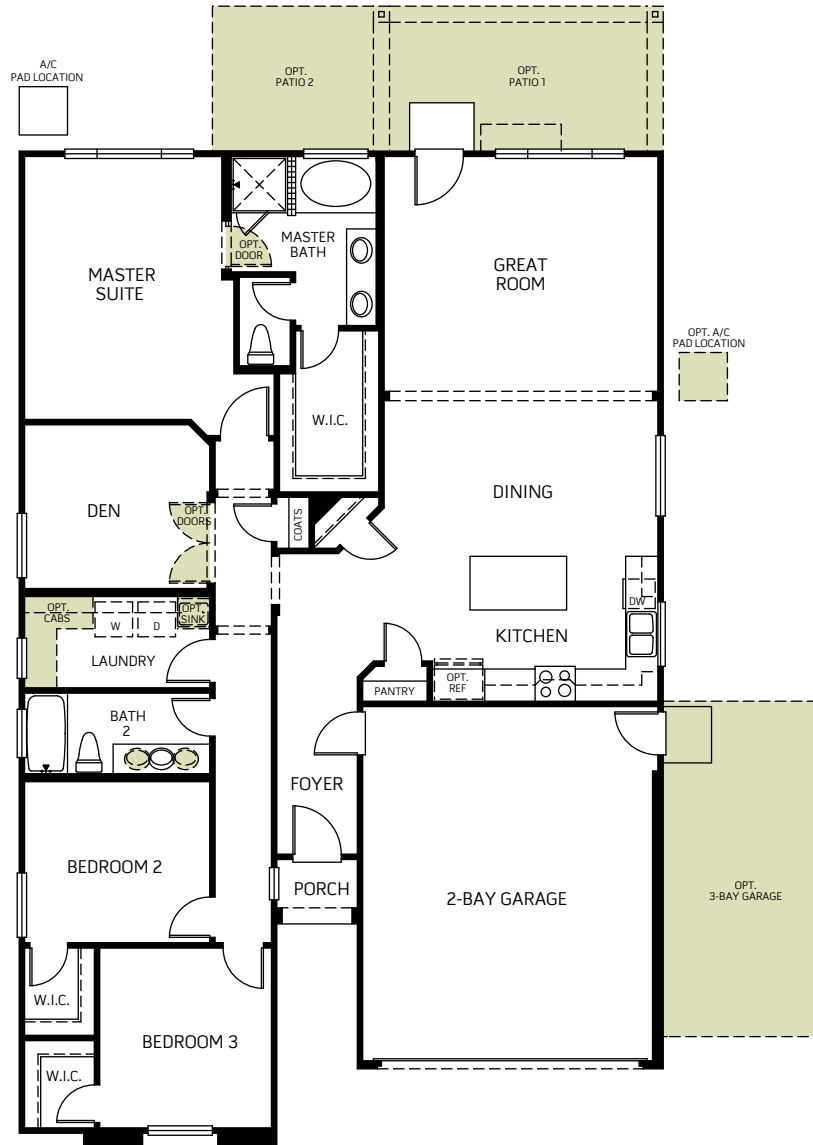


**B**



**C**

One Story • 1,855 Sq. Ft • 3 - Bedrooms • 2 Baths  
Great Room • Kitchen with Island • Den • Dining • 2-Bay Garage



FLOOR PLAN



Woodside Homes reserves the right to change elevations, specifications, materials and prices without notice. All square footage are approximate. Window location, porches, ceiling heights and room dimensions vary per elevation. The availability of certain options is subject to construction status and schedule. Optional features may be predetermined and included at additional cost on select homes. Renderings are artist's conception only. 05/2018



WoodsideHomes.com

3321 N. Elm Street  
Visalia, CA 93291  
yolandam@woodsidehomes.com  
atzimbac@woodsidehomes.com

**Lupine/4020**

**OPTIONS**



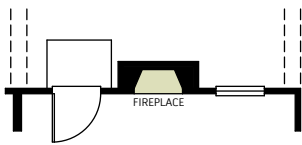
**A**



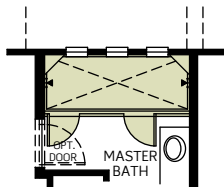
**B**



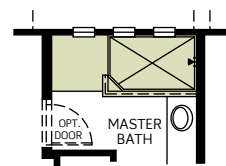
**C**



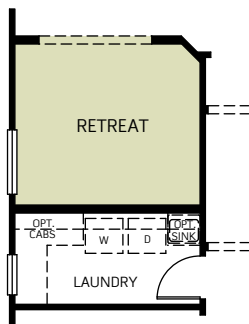
OPTIONAL FIREPLACE  
AT GREAT ROOM



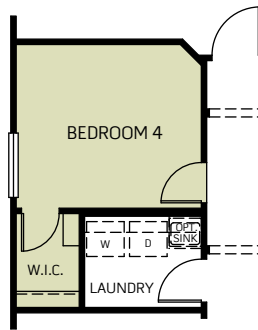
OPTIONAL SUPER SHOWER  
AT MASTER BATH



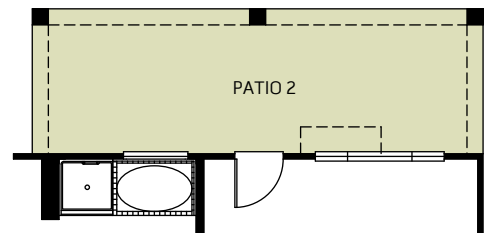
OPTIONAL SHOWER  
AT MASTER BATH



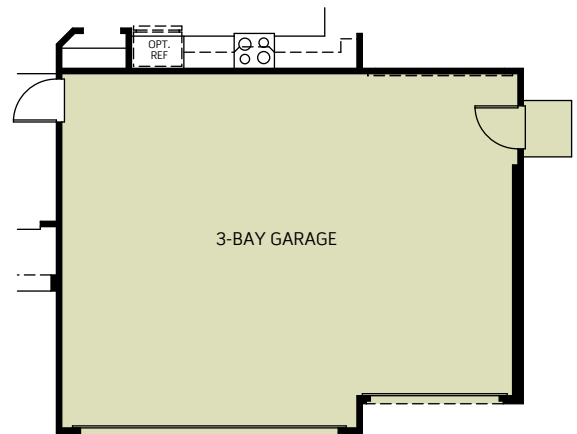
OPTIONAL RETREAT IN LIEU OF DEN



OPTIONAL BEDROOM 4 IN LIEU OF DEN



OPTIONAL PATIO 2



OPTIONAL 3 BAY GARAGE



Woodside Homes reserves the right to change elevations, specifications, materials and prices without notice. All square footage are approximate. Window location, porches, ceiling heights and room dimensions vary per elevation. The availability of certain options is subject to construction status and schedule. Optional features may be predetermined and included at additional cost on select homes. Renderings are artist's conception only. 05/2018



WoodsideHomes.com

3321 N. Elm Street  
Visalia, CA 93291  
yolandam@woodsidehomes.com  
atzimbac@woodsidehomes.com