

Waterford

Two-story • 2,946 Finished Sq. Ft. • 4,552 Total Sq. Ft. • 4-8 Bedrooms • 2.5-4 Baths • Open Great Room
Living Room • Opt. Guest Bedroom • Loft • Opt. Bedroom 4, 5 & 6 • Opt Covered Patio • 2-3 Car Garage



Traditional (A)



Farmhouse (B)



Prairie (D)

Woodside Homes reserves the right to change elevations, specifications, materials and prices without notice. All square footages are approximate. Window location, porches, ceiling heights and room dimensions vary per elevation. The availability of certain options is subject to construction status and schedule. Optional features may be predetermined and included at additional cost on select homes. Renderings are artist's conception only.
Rev. 09/20

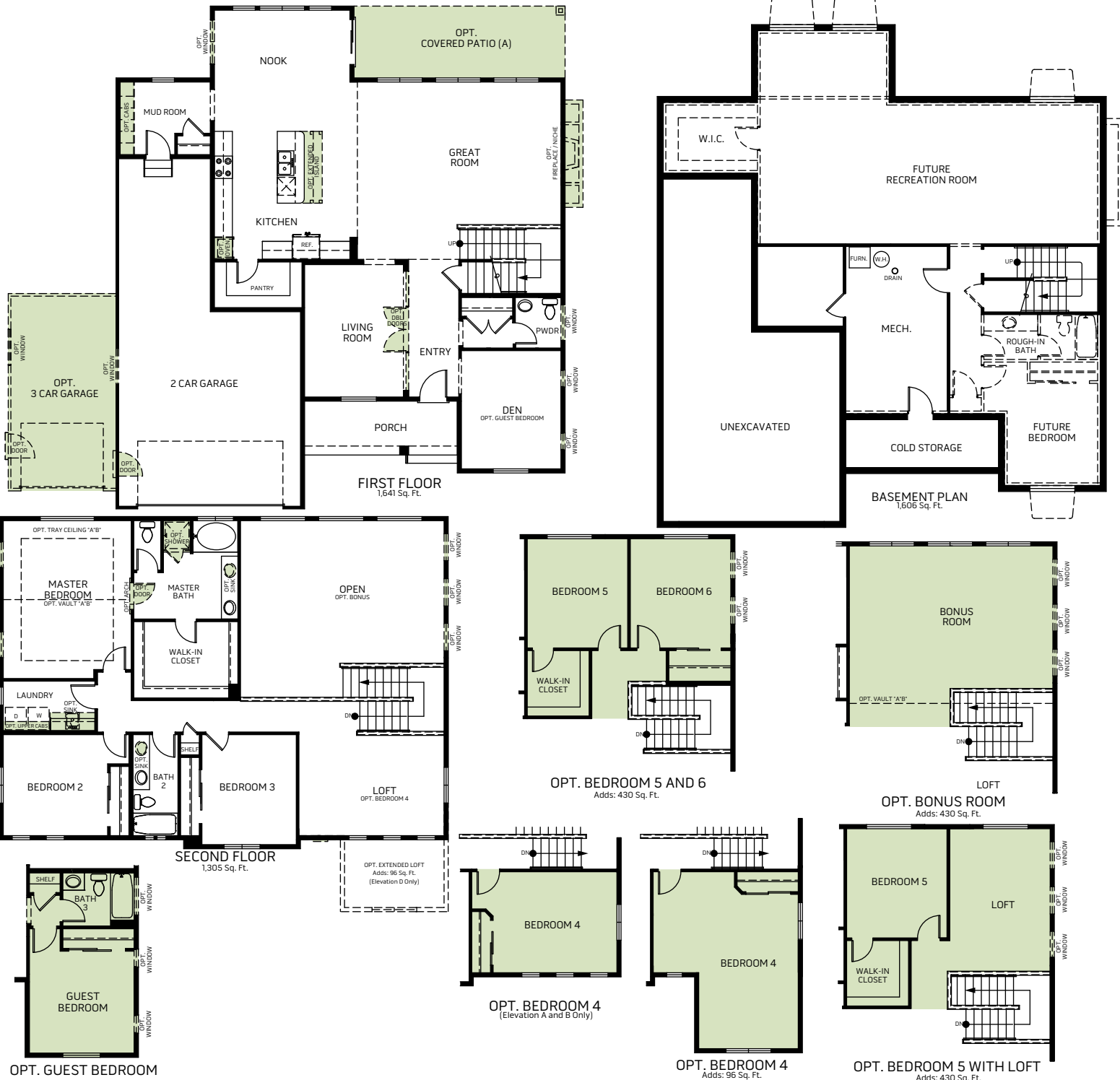


WoodsideHomes.com

2748 S. Waterview Drive Saratoga Springs, UT 84045.

Waterford

Two-story • 2,946 Finished Sq. Ft. • 4,552 Total Sq. Ft. • 4-8 Bedrooms • 2.5-4 Baths • Open Great Room Living Room • Opt. Guest Bedroom • Loft • Opt. Bedroom 4, 5 & 6 • Opt. Covered Patio • 2-3 Car Garage



Woodside Homes reserves the right to change elevations, specifications, materials and prices without notice. All square footages are approximate. Window location, porches, ceiling heights and room dimensions vary per elevation. The availability of certain options is subject to construction status and schedule. Optional features may be predetermined and included at additional cost on select homes. Renderings are artist's conception only.
Rev. 09/20

