

**Highcliffe / 5028**



**Ranch (A)**

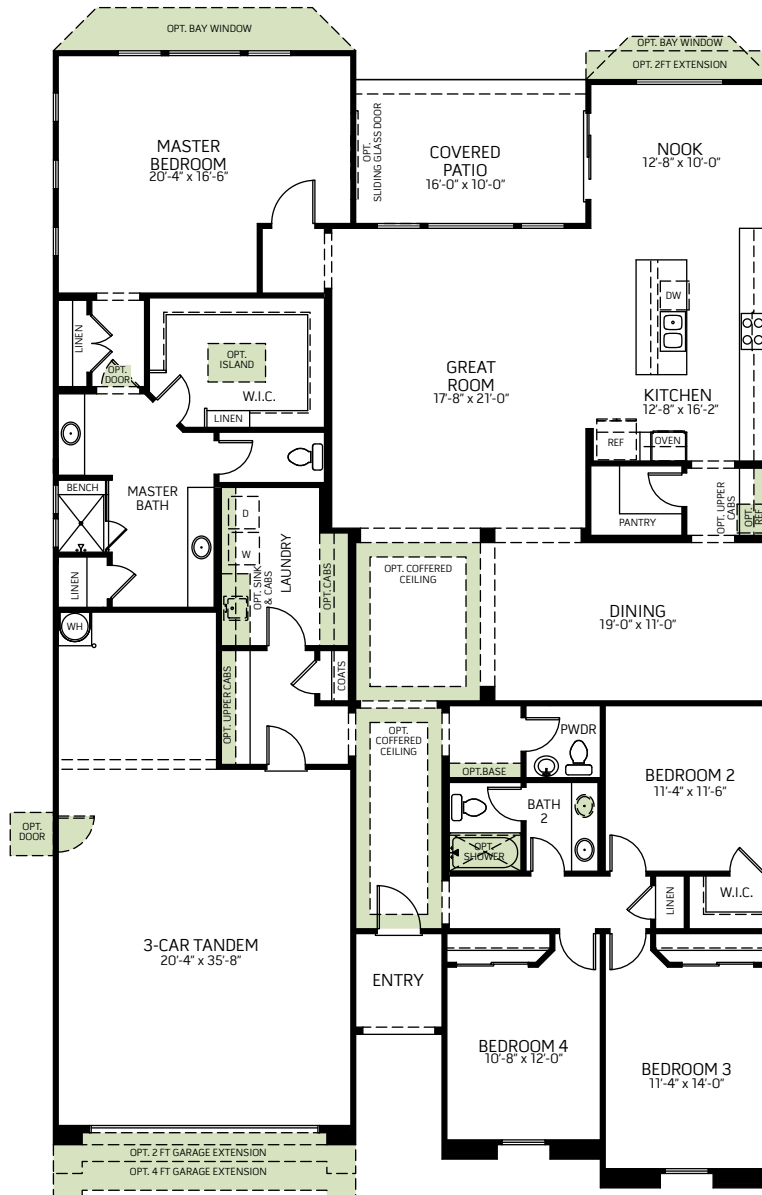


**Craftsman (B)**



**Cottage (C)**

Single-Story • 2,850 Sq. Ft. • 4 Bedrooms • 2.5 Baths • Great Room • Kitchen with Nook • Walk-in Pantry • Dining Room • Laundry • Owner's Entry • Covered Patio • 3-Car Tandem



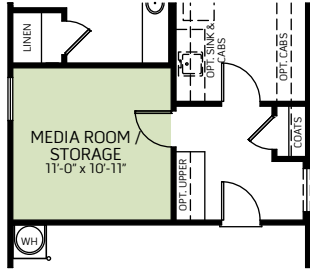
**FLOOR PLAN**

Woodside Homes reserves the right to change floor plans, maps, prices, and specifications without notice. Prices are subject to change without notice. The model information listed, including availability, floor plans, elevations, features, and other information are subject to change. Model home interior decorating, landscaping, fencing, driveways, or landscaping. Optional features may be included at additional cost and are subject to construction cut-off dates. All square foot measurements, elevations, features, and floor plans are approximate. This advertisement is for illustration purposes only and not part of a legal contract. Please see Sales Representative for full details, and additional information about options shown dashed on base floor plan. Woodside Homes Sales AZ, LLC. 01/2018

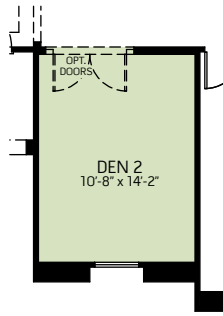


**Highcliffe / 5028**

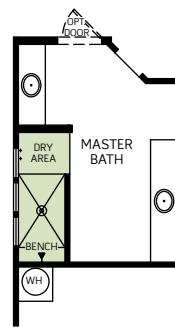
**OPTIONS**



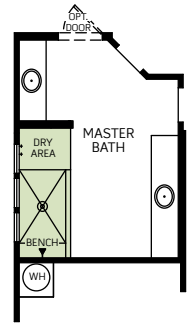
OPTIONAL MEDIA ROOM/STORAGE



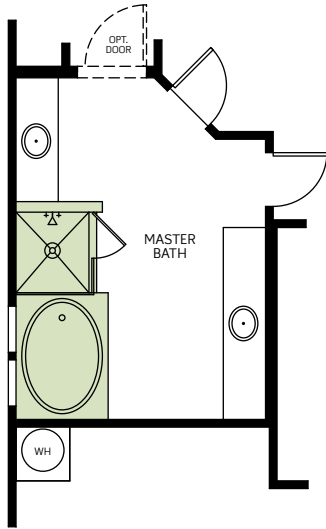
OPTIONAL DEN 2 ILO BEDROOM 4



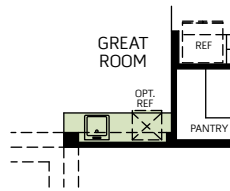
OPTIONAL EXTENDED SHOWER WITH WALL



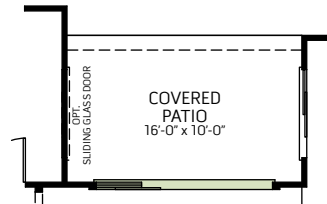
OPTIONAL EXTENDED SHOWER WITH GLASS



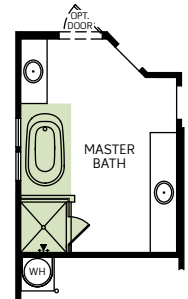
OPTIONAL SEPARATE TUB/SHOWER



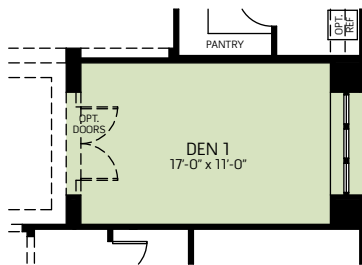
OPTIONAL WET BAR AT GREAT ROOM



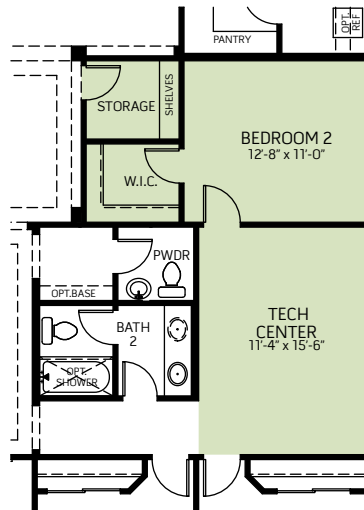
OPTIONAL MULTI-SLIDE DOOR AT GREAT ROOM



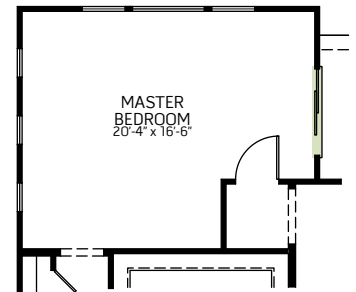
OPTIONAL FREE STANDING TUB



OPTIONAL DEN 1 ILO DINING



OPTIONAL TECH CENTER AT DINING



OPTIONAL SLIDING GLASS DOOR AT MASTER BEDROOM

Woodside Homes reserves the right to change floor plans, maps, prices, and specifications without notice. Prices are subject to change without notice. The model information listed, including availability, floor plans, elevations, features, and other information are subject to change. Model home interior decorating, landscaping, fencing, and other amenities are for display purposes only. All renderings, floor plans, and maps are artist conceptions and are not intended to be an actual depiction of the buildings, fencing, driveways, or landscaping. Optional features may be included at additional cost and are subject to construction cut-off dates. All square foot measurements, elevations, features, and floor plans are approximate. This advertisement is for illustration purposes only and not part of a legal contract. Please see Sales Representative for full details, and additional information about options shown dashed on base floor plan. Woodside Homes Sales AZ, LLC. 01/2018

