

EVERGLADE- 5007



A

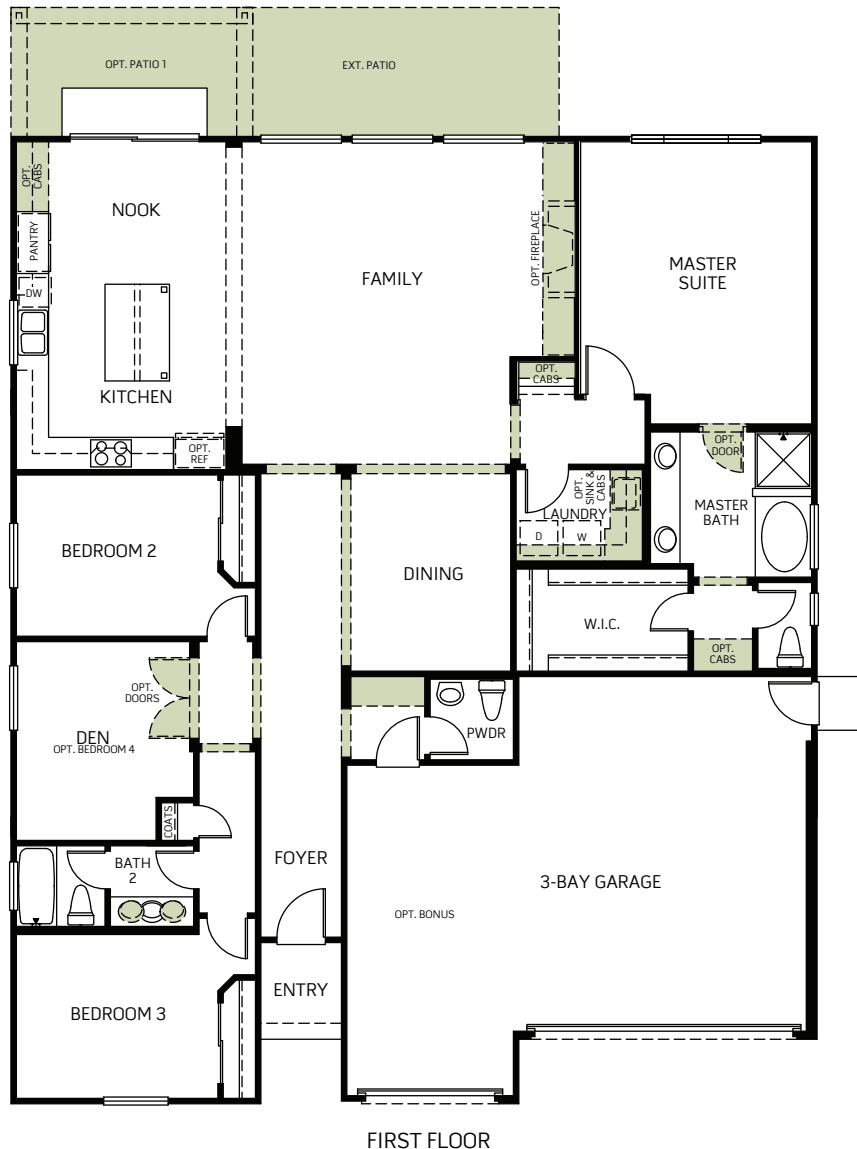


B



C

One Story • 2,232 Sq. Ft • 3 Bedrooms • 2.5 Baths
Great Room • Kitchen with Island • Study • Nook • 3-Bay Garage



FIRST FLOOR

Woodside Homes reserves the right to change elevations, specifications, materials and prices without notice. All square footages are approximate. Window location, porches, ceiling heights and room dimensions vary per elevation. The availability of certain options is subject to construction status and schedule. Optional features may be predetermined and included at additional cost on select homes. Renderings are artist's conception only.



WoodsideHomes.com

Black Oaks
3321 N. Elm Street
Visalia, CA 93291

EVERGLADE- 5007

OPTIONS



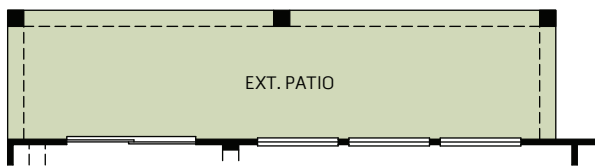
A



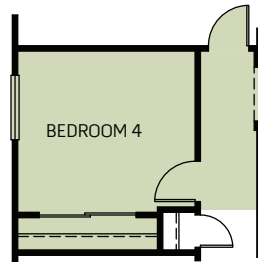
B



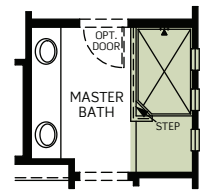
C



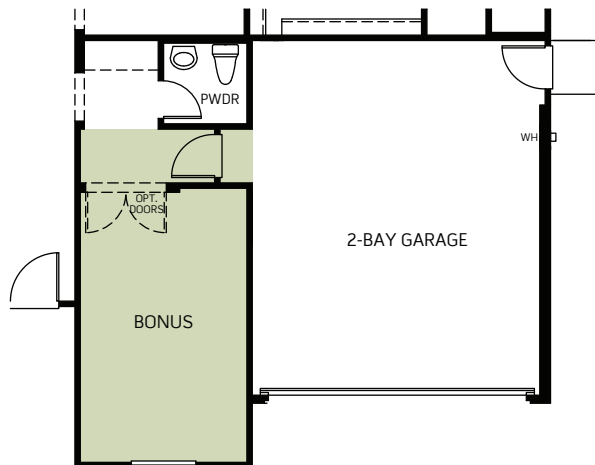
OPTIONAL PATIO 2



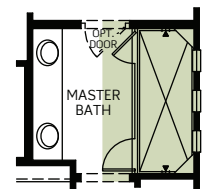
OPTIONAL BEDROOM 4 IN LIEU OF DEN



OPTIONAL SHOWER AT MASTER BATH



OPTIONAL BONUS IN LIEU OF 3-BAY GARAGE



OPTIONAL SUPER SHOWER AT MASTER BATH

Woodside Homes reserves the right to change elevations, specifications, materials and prices without notice. All square footages are approximate. Window location, porches, ceiling heights and room dimensions vary per elevation. The availability of certain options is subject to construction status and schedule. Optional features may be predetermined and included at additional cost on select homes. Renderings are artist's conception only.



WoodsideHomes.com

Black Oaks
3321 N. Elm Street
Visalia, CA 93291