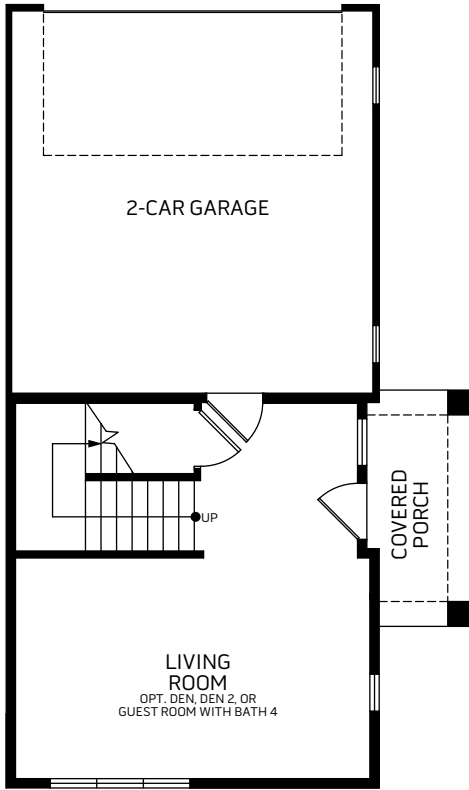
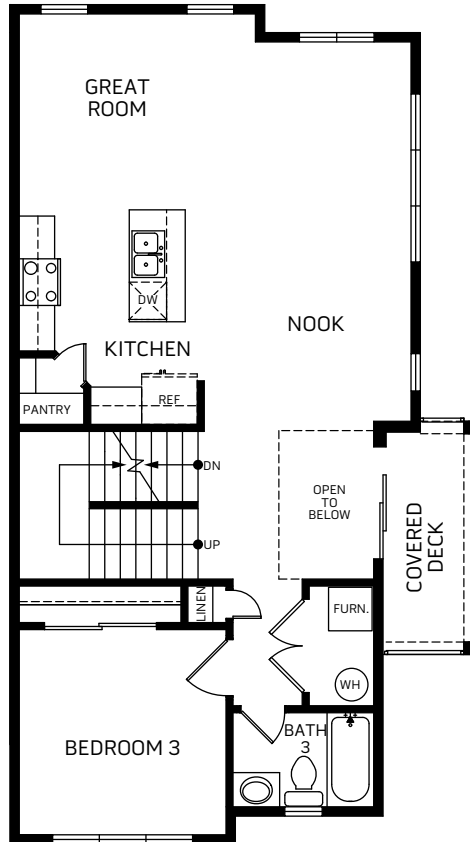


**Kensington**

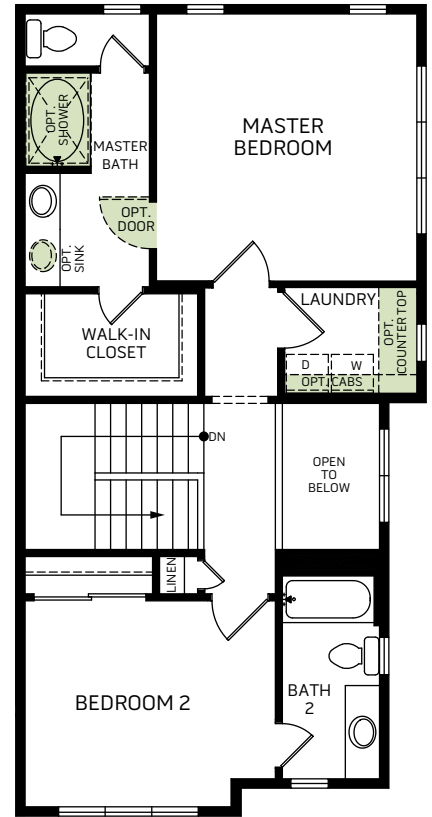
Three-story • 2,120 Finished Sq. Ft. • 3-4 Bedrooms • 3-4 Baths • Living Room • Large Covered Deck • Great Room • Opt. Den or Guest Bedroom With Bath • 2 Car Garage



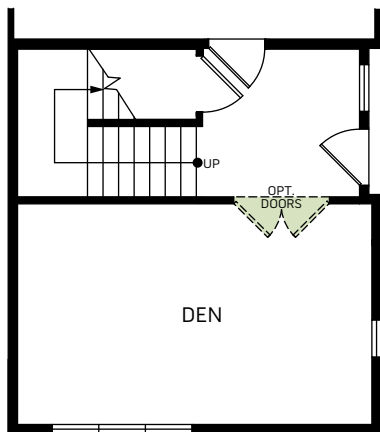
FIRST FLOOR  
417 Sq. Ft.



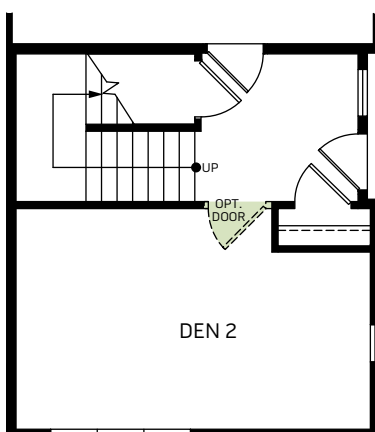
SECOND FLOOR  
921 Sq. Ft.



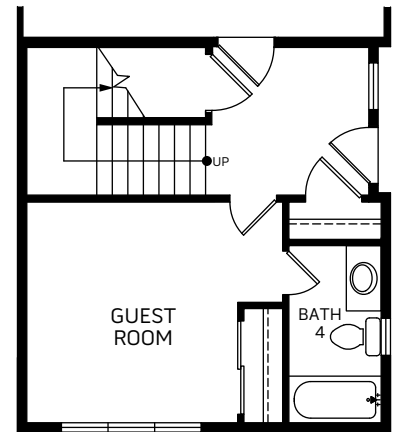
THIRD FLOOR  
782 Sq. Ft.



OPT. DEN



OPT. DEN 2



OPT. GUEST ROOM

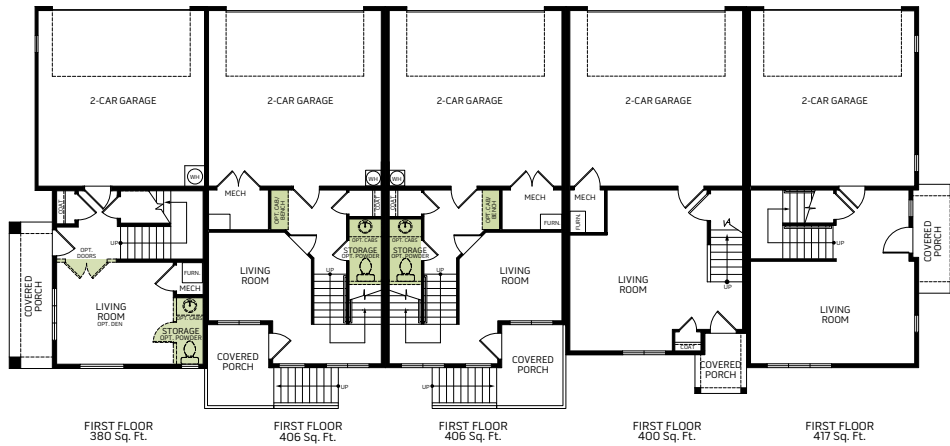
Woodside Homes reserves the right to change elevations, specifications, materials and prices without notice. All square footages are approximate. Window location, porches, ceiling heights and room dimensions vary per elevation. The availability of certain options is subject to construction status and schedule. Optional features may be predetermined and included at additional cost on select homes. Renderings are artist's conception only.  
Rev. 09/20



**5 PLEX & 6 PLEX**



**Birkhall    Buckingham    Buckingham    Hillsborough    Kensington**



**Birkhall    Hillsborough    Buckingham    Buckingham    Hillsborough    Kensington**

