

**Washington**

Three-story • 2,109 Finished Sq. Ft. • 2,692 Total Sq. Ft. • 4-5 Bedrooms • 2.5-3.5 Baths • Great Room • Loft • Walk-In Closet & Mud Room • 2 Car Garage



**BASEMENT**  
583 Sq. Ft.

**FIRST FLOOR**  
632 Sq. Ft.

**SECOND FLOOR**  
744 Sq. Ft.

**THIRD FLOOR**  
733 Sq. Ft.



Woodside Homes reserves the right to change elevations, specifications, materials and prices without notice. All square footages are approximate. Window location, porches, ceiling heights and room dimensions vary per elevation. The availability of certain options is subject to construction status and schedule. Optional features may be predetermined and included at additional cost on select homes. Renderings are artist's conception only. Rev. 07/20

**DAY RANCH**



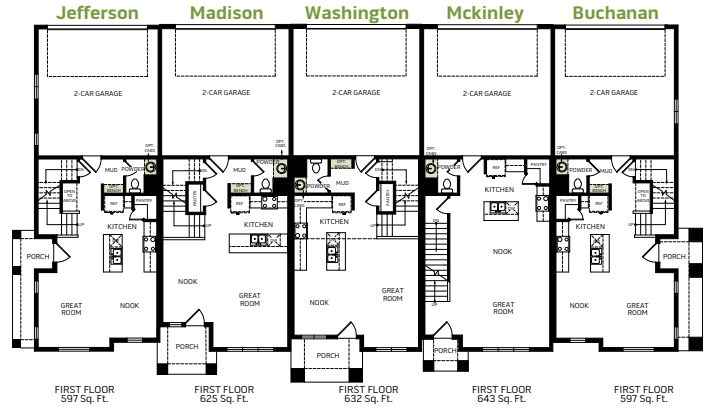
WoodsideHomes.com

1202 West Dun Way, Bluffdale, UT 84065

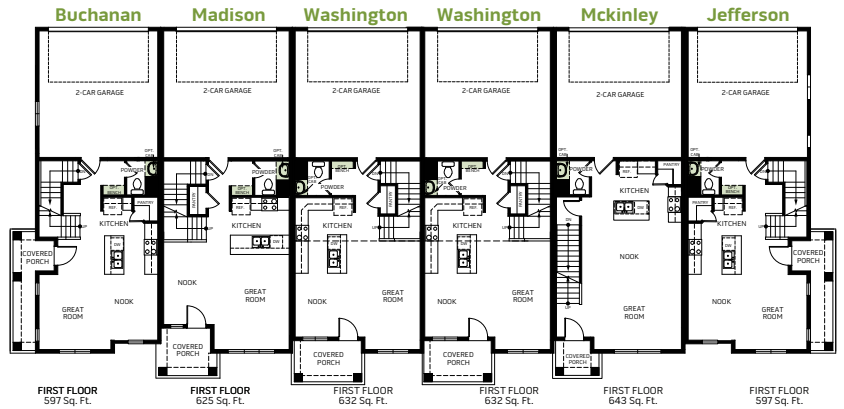
**5 PLEX B, 6 PLEX B & 7 PLEX**



**5 PLEX B**



**6 PLEX B**



**7 PLEX**

