

CYPRESS

Two Story • 2,086 Finished Sq.Ft. • 2,730 Total Sq.Ft. • 4 Bedrooms • 3 Baths • Great Room • 2 Car Garage



A



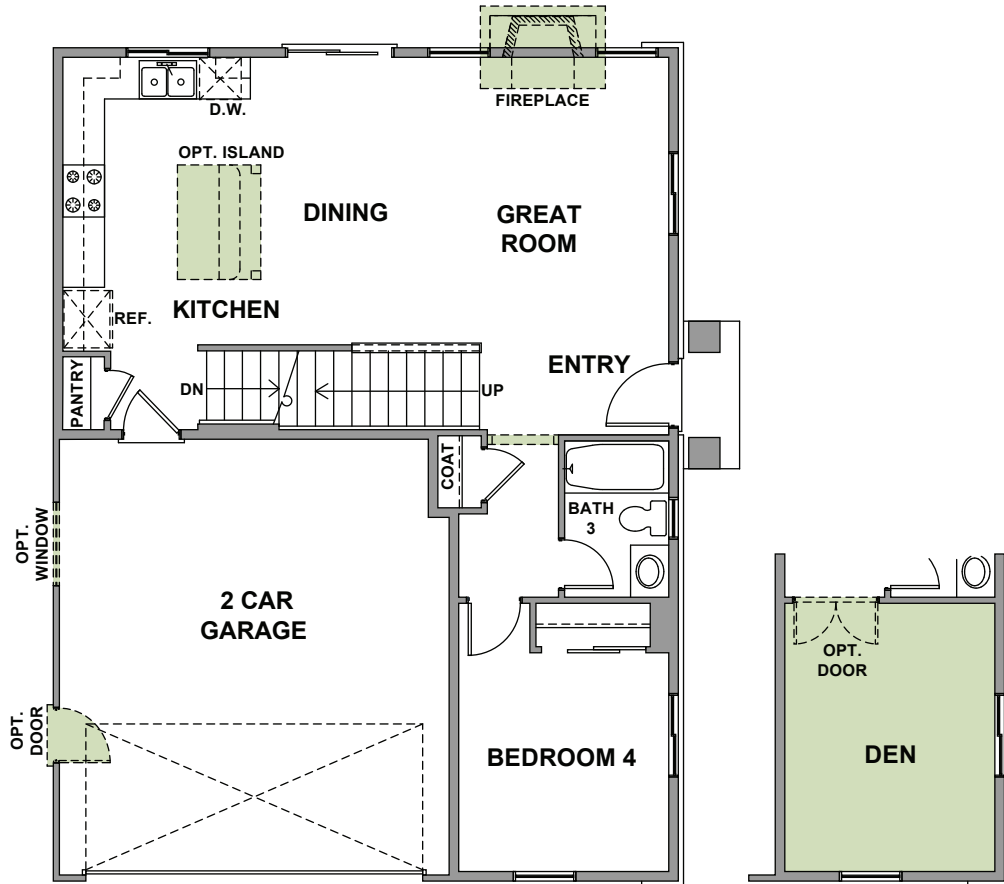
B



C



D



FIRST FLOOR PLAN
801 Sq.Ft.

OPT. DEN



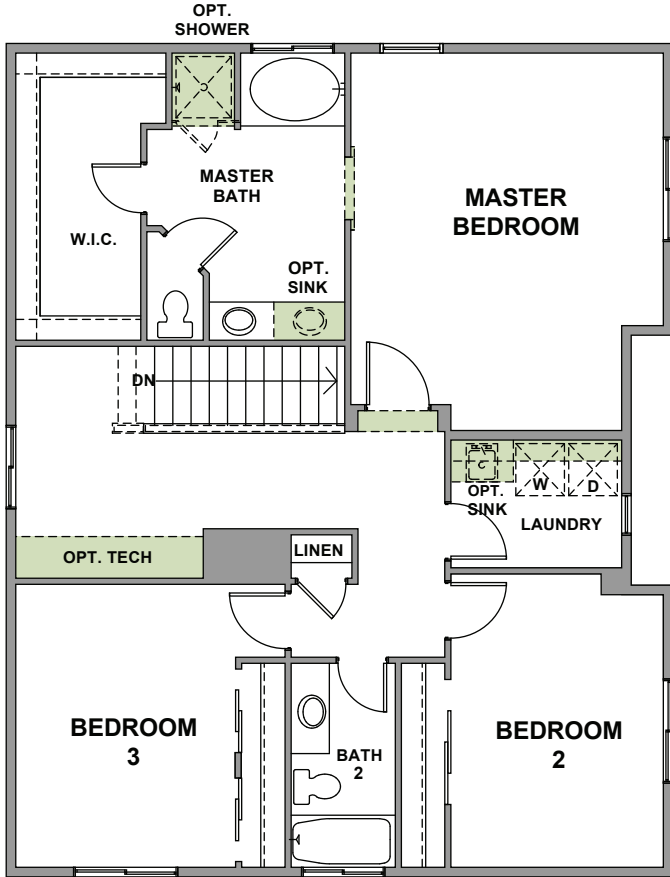
Woodside Homes reserves the right to change elevations, specifications, materials and prices without notice. All square footages are approximate. Window location, porches, ceiling heights and room dimensions vary per elevation. The availability of certain options is subject to construction status and schedule. Optional features may be predetermined and included at additional cost on select homes. Renderings are artist's conception only.



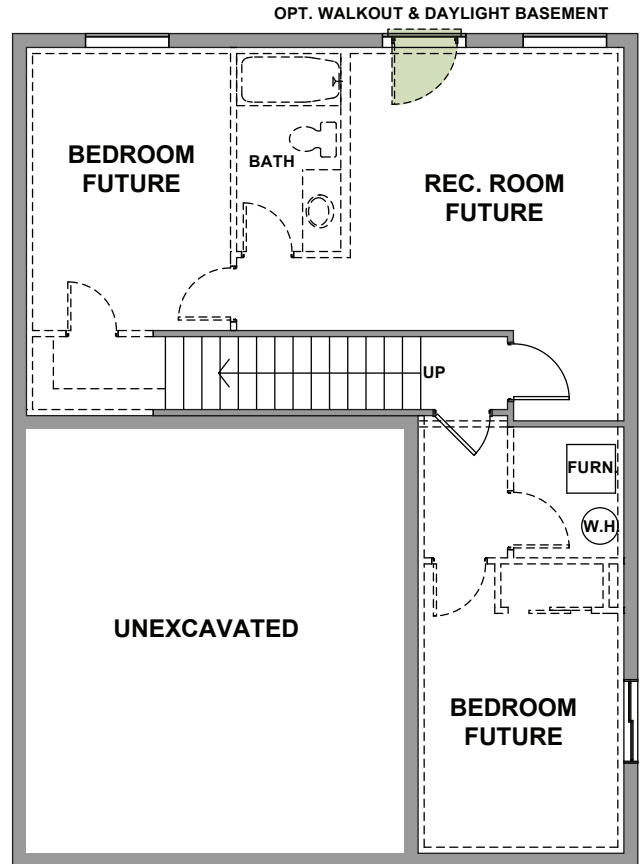
WoodsideHomes.com

CYPRESS

Two Story • 2,086 Finished Sq.Ft. • 2,730 Total Sq.Ft. • 4 Bedrooms • 3 Baths • Great Room • 2 Car Garage



SECOND FLOOR PLAN
1,220 Sq.Ft.



BASEMENT FLOOR PLAN
65 Sq.Ft. Finished
644 Sq.Ft. Unfinished



Woodside Homes reserves the right to change elevations, specifications, materials and prices without notice. All square footages are approximate. Window location, porches, ceiling heights and room dimensions vary per elevation. The availability of certain options is subject to construction status and schedule. Optional features may be predetermined and included at additional cost on select homes. Renderings are artist's conception only.

