

**ASPEN**

Two Story • 1,823 Finished Sq.Ft. • 2,471 Total Sq.Ft. • 3 Bedrooms • 2-1/2 Baths • Great Room • 2-Car Garage



A



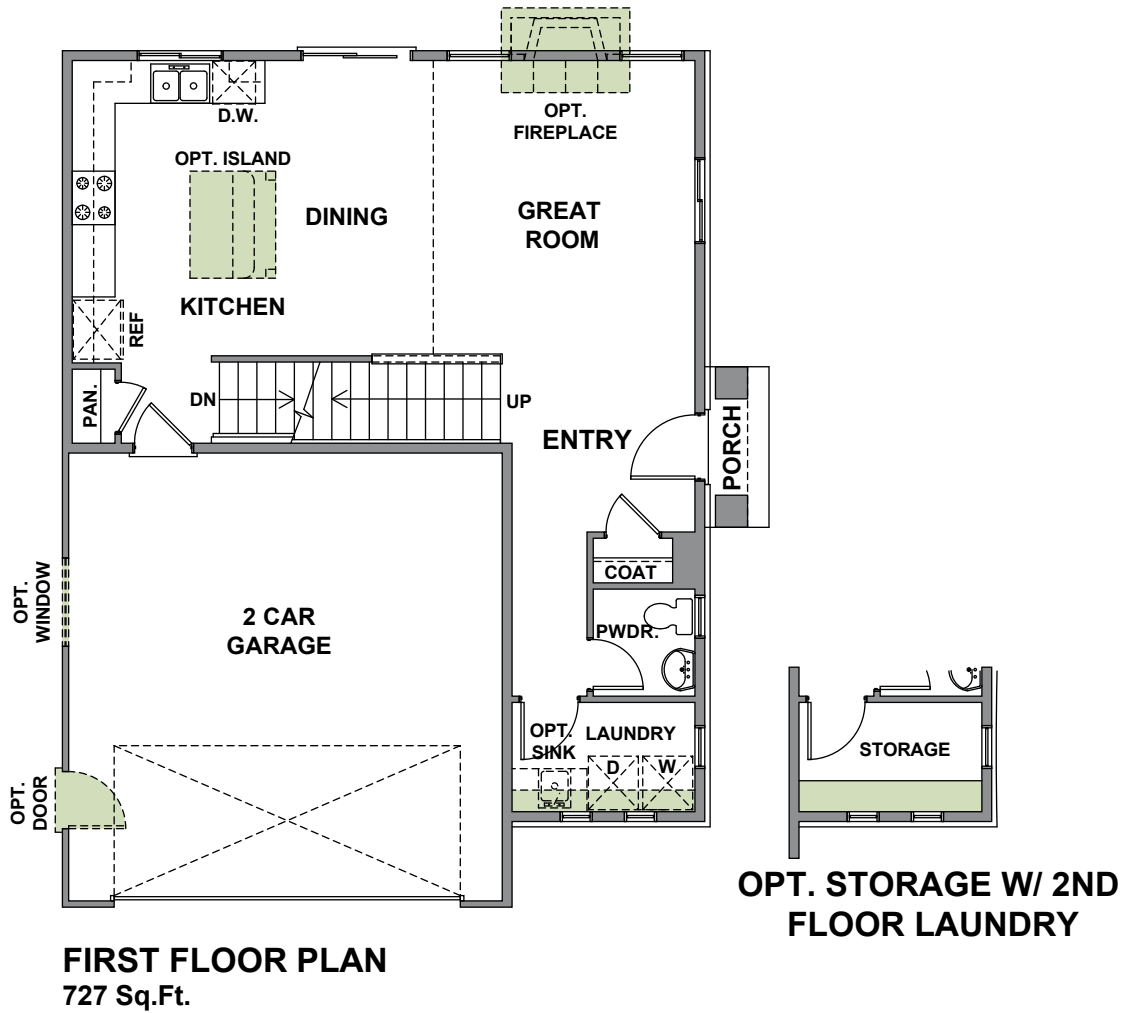
B



C



D



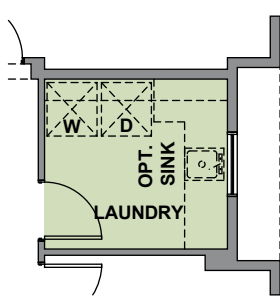
Woodside Homes reserves the right to change elevations, specifications, materials and prices without notice. All square footages are approximate. Window location, porches, ceiling heights and room dimensions vary per elevation. The availability of certain options is subject to construction status and schedule. Optional features may be predetermined and included at additional cost on select homes. Renderings are artist's conception only.



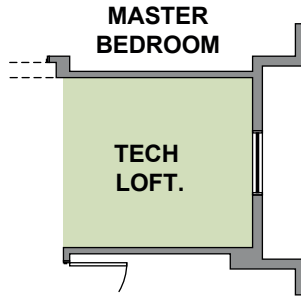
WoodsideHomes.com

**ASPEN**

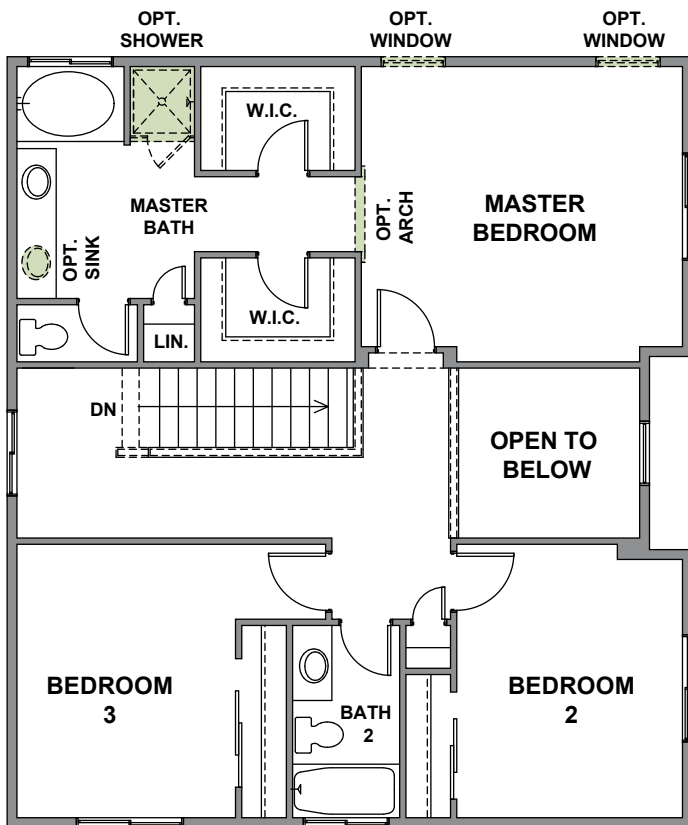
Two Story • 1,823 Finished Sq.Ft. • 2,471 Total Sq.Ft. • 3 Bedrooms • 2-1/2 Baths • Great Room • 2-Car Garage



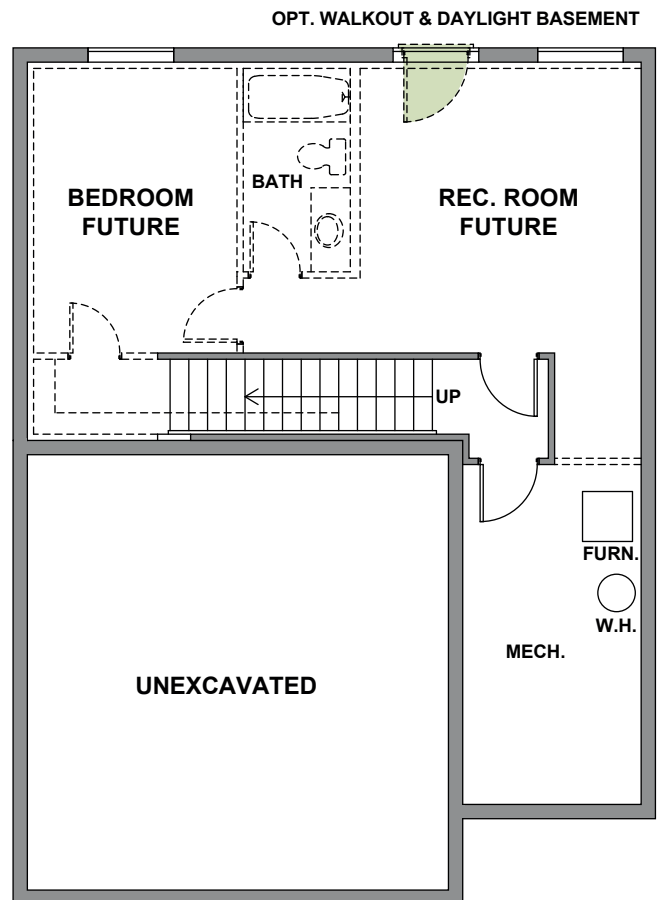
**OPT. LAUNDRY**  
Adds: 68 Sq.Ft.



**OPT. TECH. LOFT**  
Adds: 68 Sq.Ft.



**SECOND FLOOR PLAN**  
1,031 Sq.Ft.



**BASEMENT FLOOR PLAN**  
65 Sq.Ft. Finished  
648 Sq.Ft. Unfinished



Woodside Homes reserves the right to change elevations, specifications, materials and prices without notice. All square footages are approximate. Window location, porches, ceiling heights and room dimensions vary per elevation. The availability of certain options is subject to construction status and schedule. Optional features may be predetermined and included at additional cost on select homes. Renderings are artist's conception only.

