

**BIRKDALE/5640**



A



B



C

One Story • 2,333-2,568 Sq. Ft. • 3 Bedrooms • 2.5 Baths  
Great Room • Kitchen with Island • Nook • Den • 3-Bay Garage



FLOOR PLAN

Woodside Homes reserves the right to change elevations, specifications, materials and prices without notice. All square footages are approximate. Window location, porches, ceiling heights and room dimensions vary per elevation. The availability of certain options is subject to construction status and schedule. Optional features may be predetermined and included at additional cost on select homes. Renderings are artist's conception only.



**BIRKDALE/5640**

**OPTIONS**



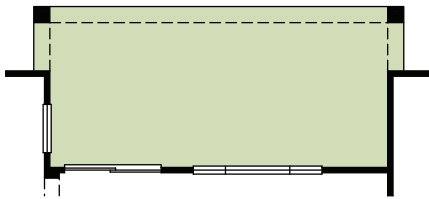
A



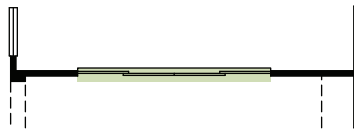
B



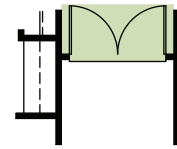
C



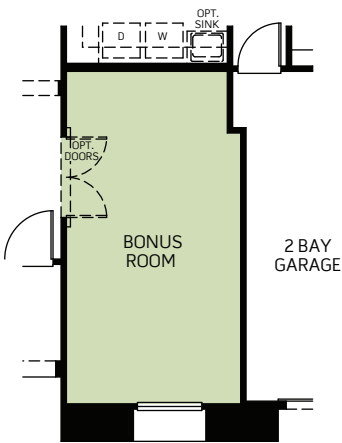
OPTIONAL EXTENDED PATIO



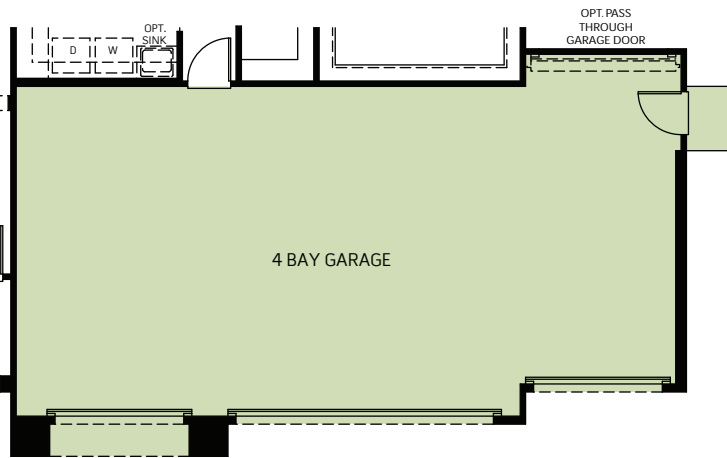
OPTIONAL SLIDING GLASS DOOR AT NOOK



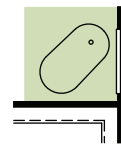
OPTIONAL PAIR OF ENTRY DOORS



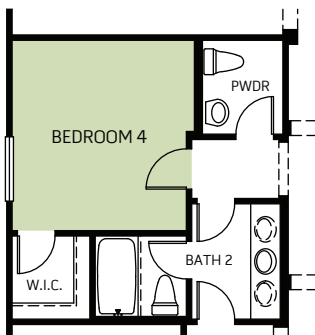
OPTIONAL BONUS IN LIEU OF 3RD BAY GARAGE



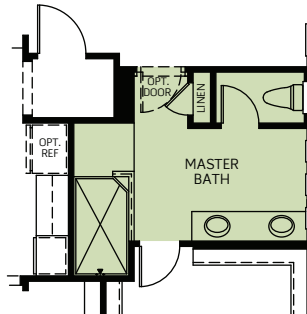
OPTIONAL 4 BAY GARAGE



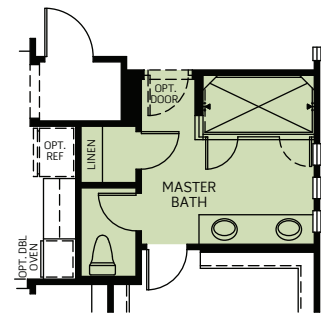
OPTIONAL FREE STANDING TUB



OPTIONAL BEDROOM 4 IN LIEU OF DEN



OPTIONAL SHOWER AT MASTER BATH



OPTIONAL SUPER SHOWER AT MASTER BATH

Woodside Homes reserves the right to change elevations, specifications, materials and prices without notice. All square footages are approximate. Window location, porches, ceiling heights and room dimensions vary per elevation. The availability of certain options is subject to construction status and schedule. Optional features may be predetermined and included at additional cost on select homes. Renderings are artist's conception only.

