

## PLAN 2 (PRELIMINARY)



**A: Mediterranean Revival**



**B: Farmhouse Victorian**

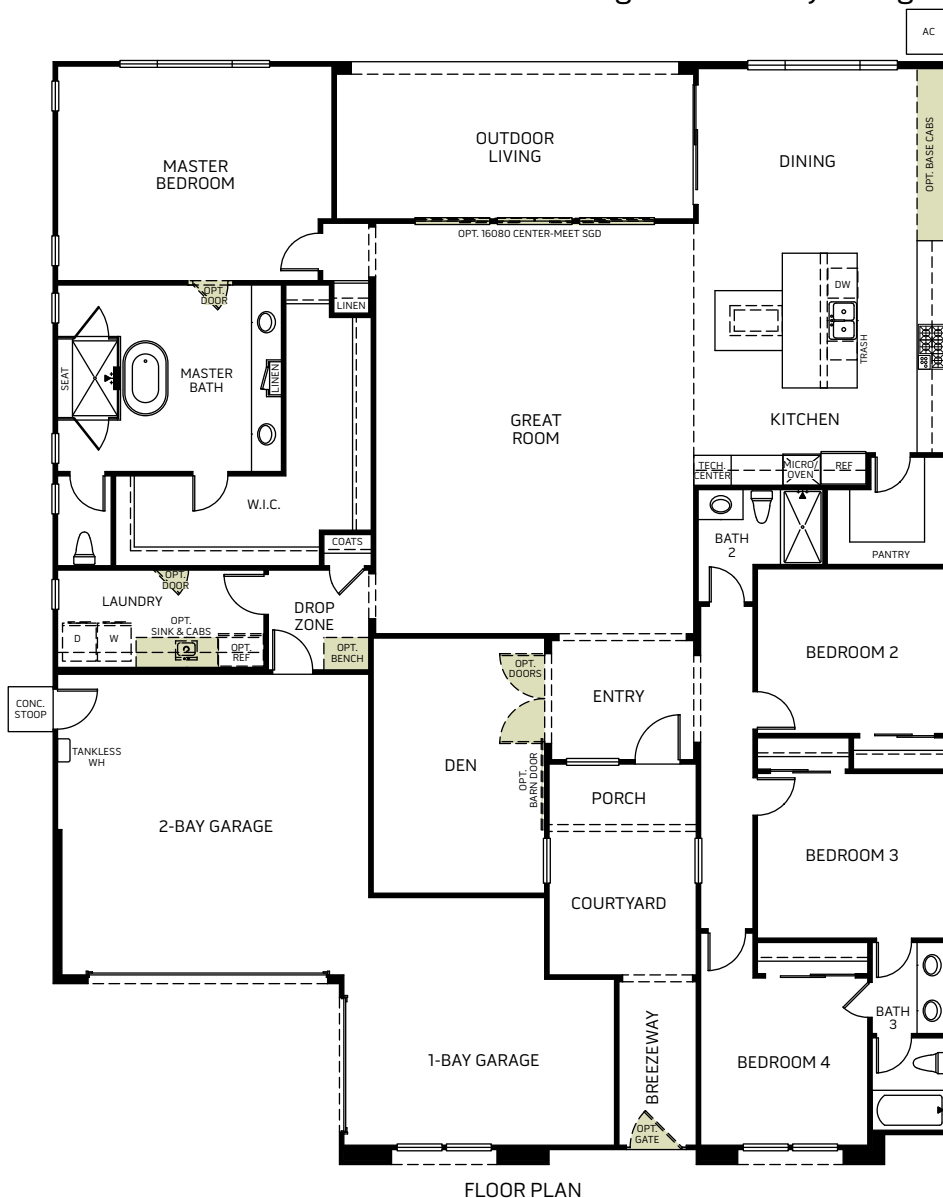


**C: European Country**



**D: Craftsman**

One Story • 2,979 Sq. Ft. • 4 Bedrooms • 3 Baths  
 Great Room • Kitchen with Island • Dining • Den • 3-Bay Garage



FLOOR PLAN



## PLAN 2 (PRELIMINARY)

### OPTIONS



**A: Mediterranean Revival**



**B: Farmhouse Victorian**

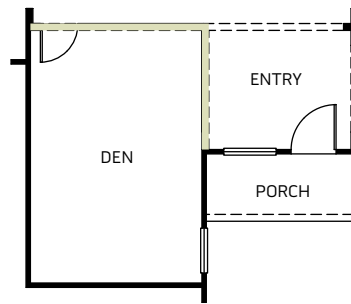


**C: European Country**

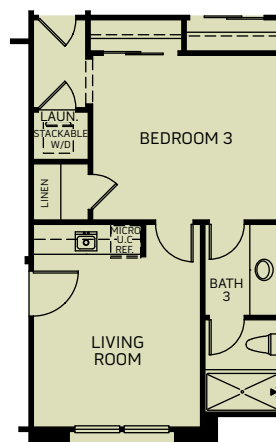


**D: Craftsman**

One Story • 2,979 Sq. Ft. • 4 Bedrooms • 3 Baths  
 Great Room • Kitchen with Island • Dining • Den • 3-Bay Garage



OPT. GLASS WALL AT DEN



OPT. HOME PLUS AT BEDROOM 3, 4 & BATH 3