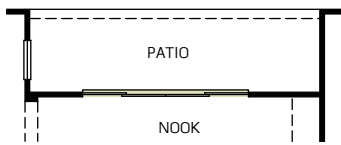




**AMARYLLIS**

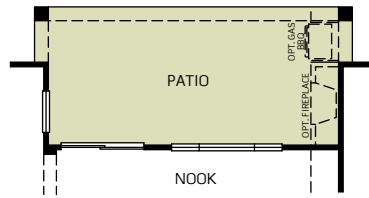
**OPTIONS**

**A**



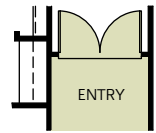
OPTIONAL SLIDING GLASS DOOR AT NOOK

**B**

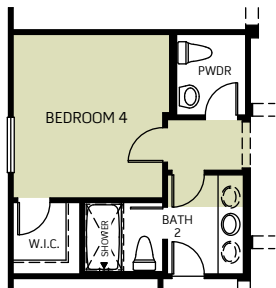


OPTIONAL EXTENDED PATIO

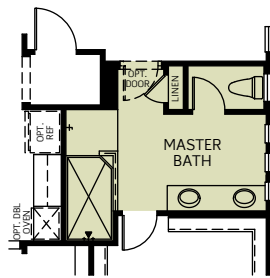
**C**



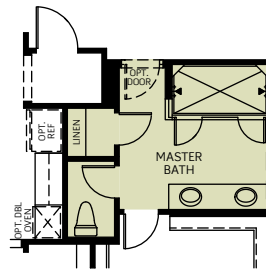
OPTIONAL PAIR OF ENTRY DOORS



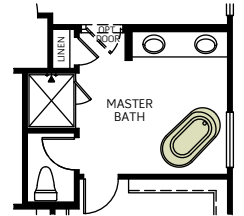
OPTIONAL BEDROOM 4 ILO DEN



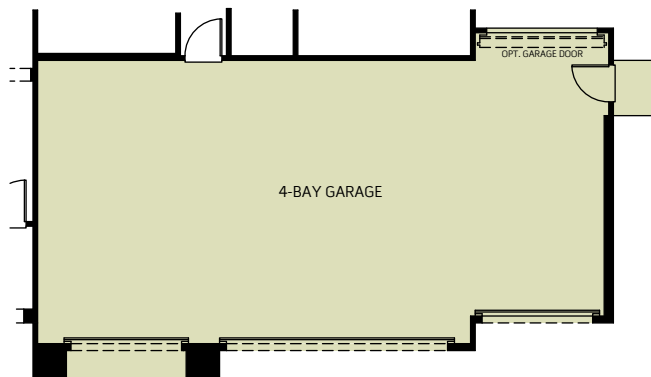
WALK-IN SHOWER AT MASTER BATH



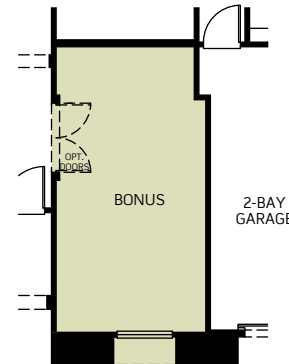
OPTIONAL SUPER SHOWER AT MASTER BATH



OPTIONAL FREE-STANDING TUB



OPTIONAL 4 BAY GARAGE



OPTIONAL BONUS ILO  
3 BAY GARAGE

Woodside Homes reserves the right to change elevations, specifications, materials and prices without notice. All square footages are approximate. Window location, porches, ceiling heights and room dimensions vary per elevation. The availability of certain options is subject to construction status and schedule. Optional features may be predetermined and included at additional cost on select homes. Renderings are artist's conception only.

