

**OLIVE - 5016**



**A - Cottage**

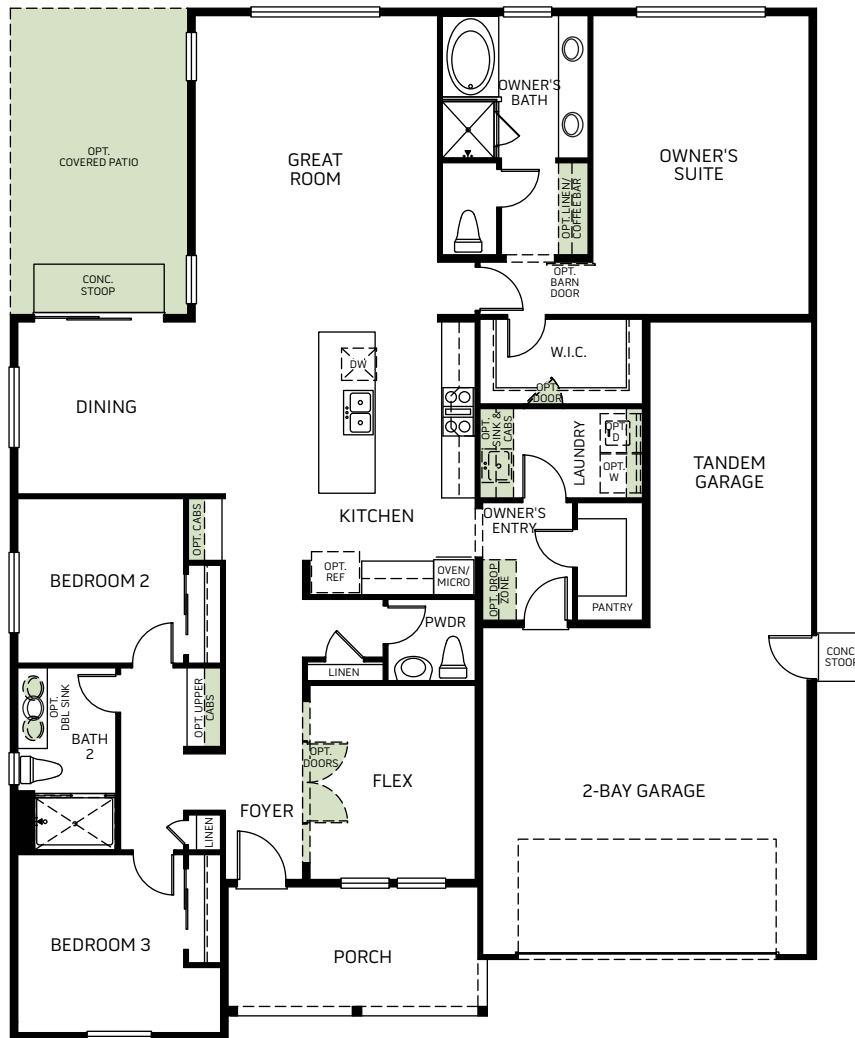


**B - Craftsman**



**C - Farmhouse**

One Story • 2,115 - 2,311 Sq. Ft • 3 Bedrooms • 2.5 Baths  
Great Room • Kitchen with Island • Dining • 2-Bay Plus Tandem Garage



FLOOR PLAN

Woodside Homes reserves the right to change elevations, specifications, materials and prices without notice. All square footages are approximate. Window location, porches, ceiling heights and room dimensions vary per elevation. The availability of certain options is subject to construction status and schedule. Optional features may be predetermined and included at additional cost on select homes. Renderings are artist's conception only.



**OLIVE - 5016**

**OPTIONS**



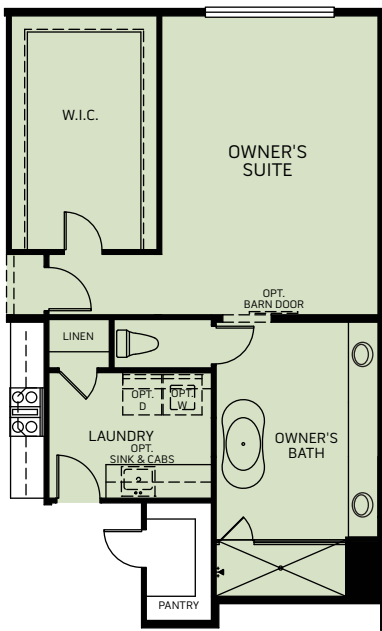
**A - Cottage**



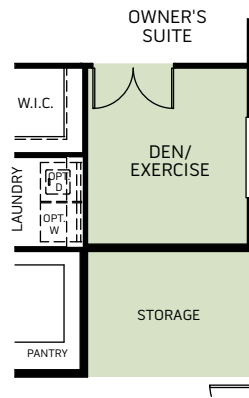
**B - Craftsman**



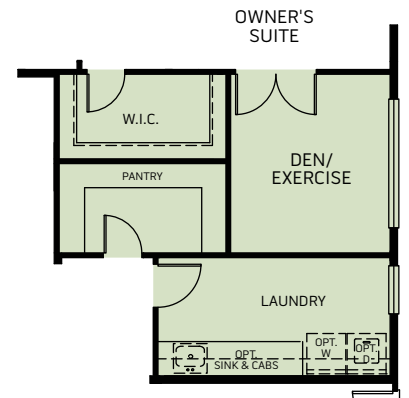
**C - Farmhouse**



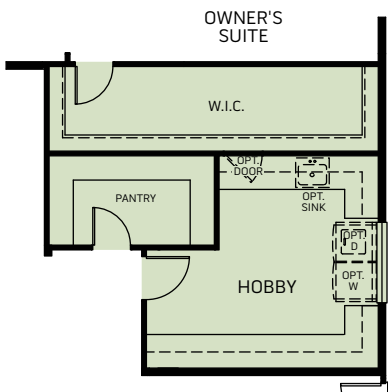
OPT. OWNER'S SUITE  
+180 SQ. Ft.



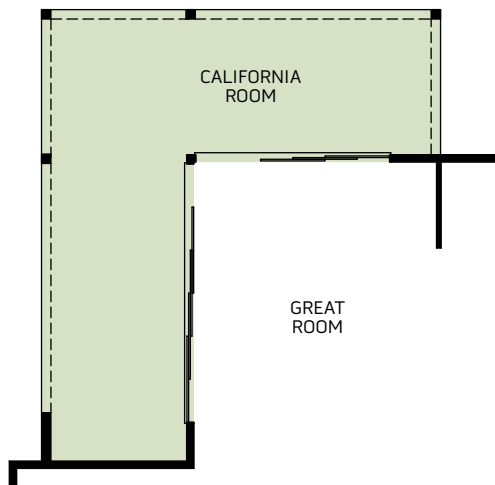
OPT. DEN/ EXERCISE AT TANDEM  
+116 SQ. Ft.



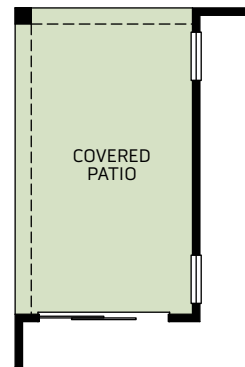
OPT. DEN / UTILITY AT TANDEM  
+196 SQ. Ft.



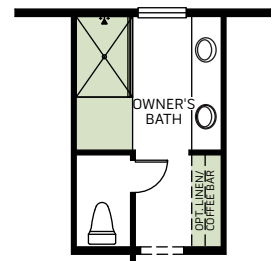
OPT. HOBBY/ UTILITY AT TANDEM  
+196 SQ. Ft.



OPT. CALIFORNIA ROOM



OPT. COVERED PATIO



OPT. WALK-IN SHOWER

Woodside Homes reserves the right to change elevations, specifications, materials and prices without notice. All square footages are approximate. Window location, porches, ceiling heights and room dimensions vary per elevation. The availability of certain options is subject to construction status and schedule. Optional features may be predetermined and included at additional cost on select homes. Renderings are artist's conception only.

