

**GLACIER - 4035**



**A**

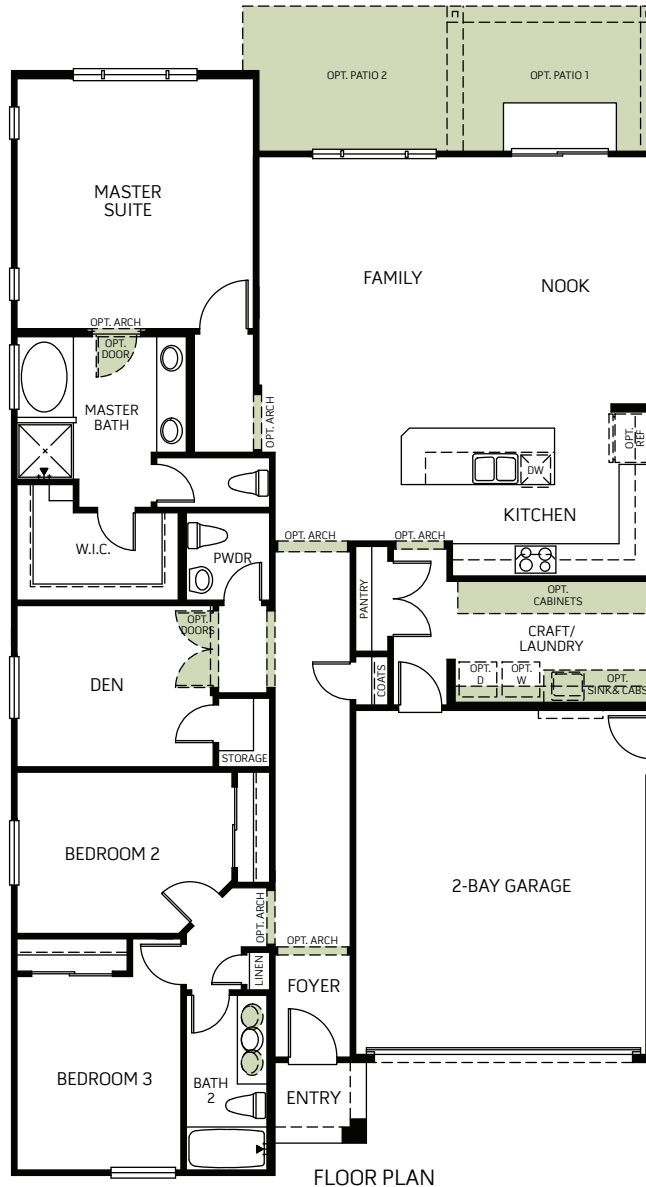


**B**



**C**

One Story • 2,043 Sq. Ft • 3 Bedrooms • 2.5 Baths  
Great Room • Kitchen with Island • Nook • Den • 2-Bay Garage



Woodside Homes reserves the right to change elevations, specifications, materials and prices without notice. All square footages are approximate. Window location, porches, ceiling heights and room dimensions vary per elevation. The availability of certain options is subject to construction status and schedule. Optional features may be predetermined and included at additional cost on select homes. Renderings are artist's conception only.



**GLACIER - 4035**

**OPTIONS**



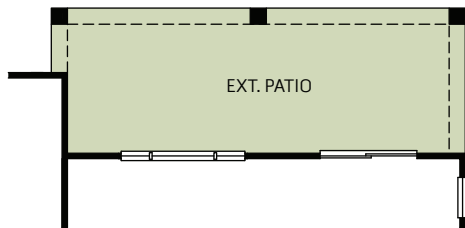
A



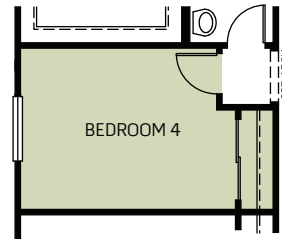
B



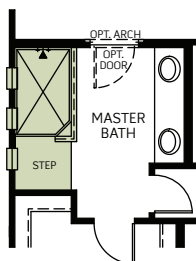
C



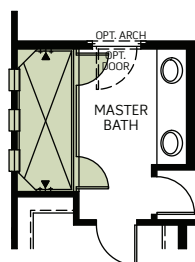
OPTIONAL PATIO 2



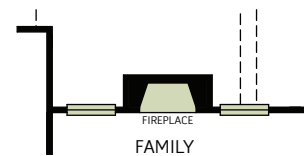
OPTIONAL BEDROOM 4 IN LIEU OF DEN



OPTIONAL SHOWER AT MASTER BATH



OPTIONAL SUPER SHOWER AT MASTER BATH



OPTIONAL FIREPLACE AT FAMILY

Woodside Homes reserves the right to change elevations, specifications, materials and prices without notice. All square footages are approximate. Window location, porches, ceiling heights and room dimensions vary per elevation. The availability of certain options is subject to construction status and schedule. Optional features may be predetermined and included at additional cost on select homes. Renderings are artist's conception only.

